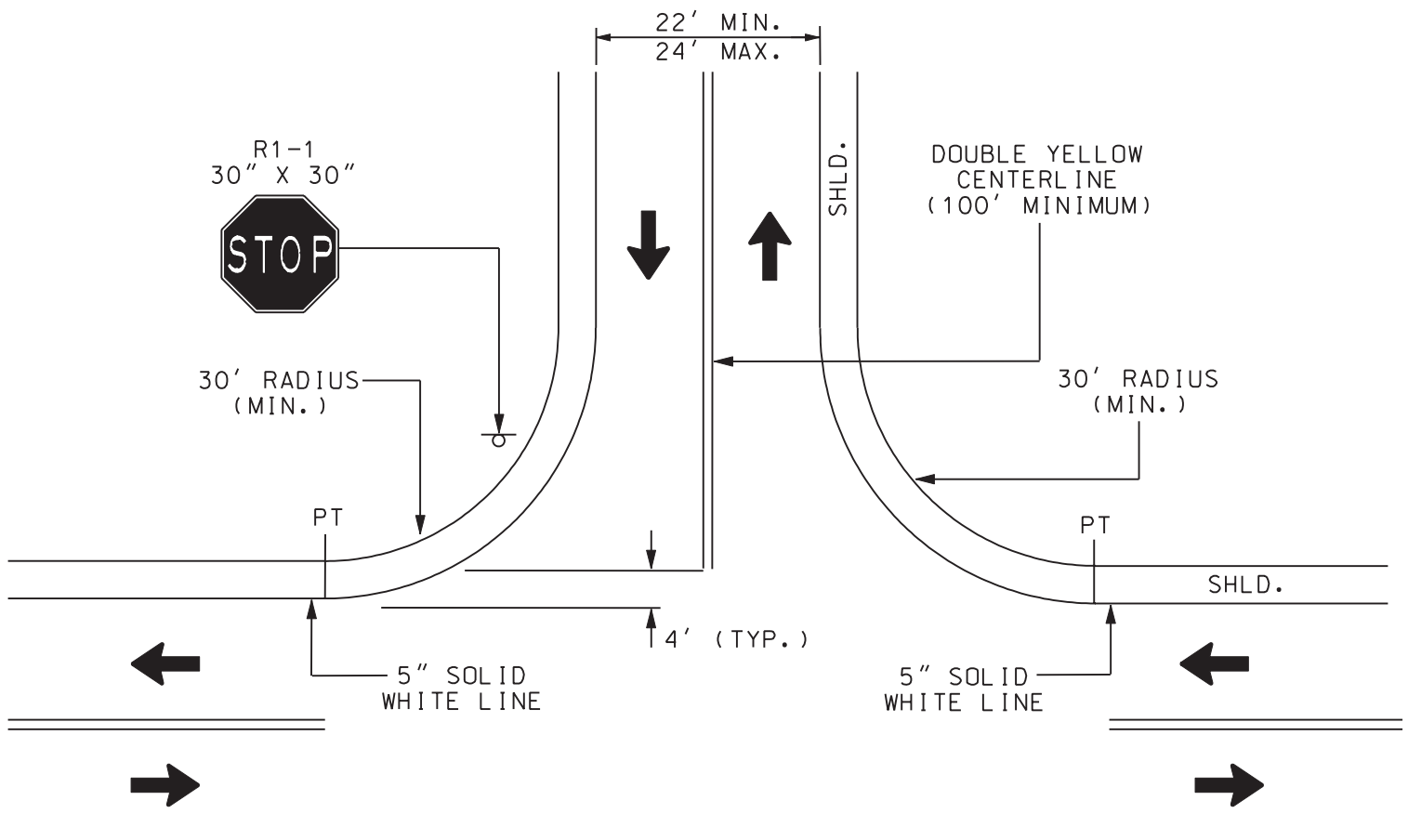


NOTES:

1. MINIMUM CHANNELIZATION LIMITS IS SHOWN, ASSUMING AN OPEN SECTION, RURAL HIGHWAY. REFER TO 13.2.
2. TURNING LANES AND SHOULDERS ARE NOT SHOWN.
3. REFER TO 12.0 FOR STREET CONNECTION STANDARDS.

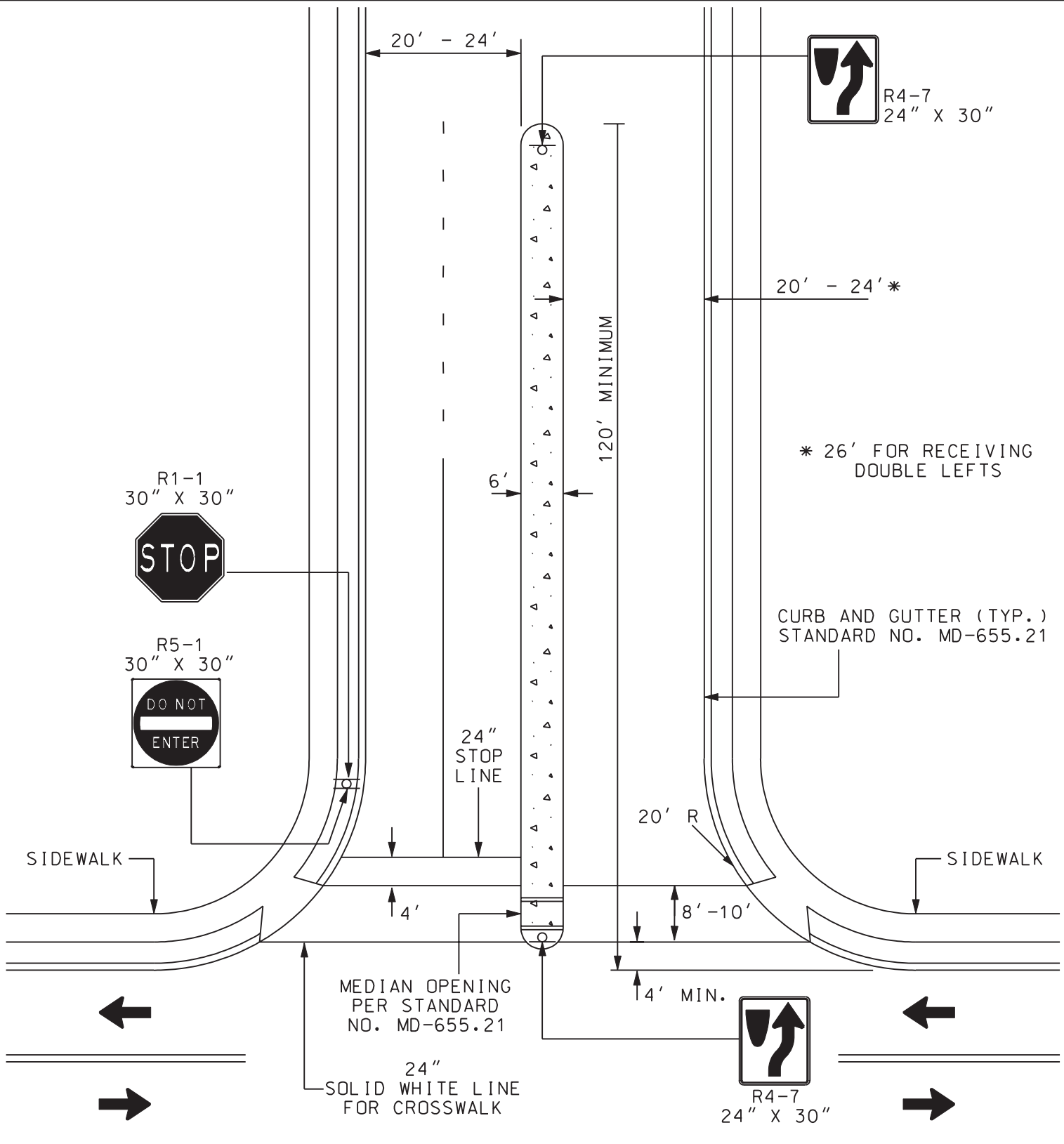
TYPICAL CLOSED SECTION  
STREET CONNECTION  
ENGINEERING ACCESS PERMITS



NOTES:

1. CANALIZATION MAY BE REQUIRED ALONG THE STATE HIGHWAY IN ACCORDANCE WITH 13.2.
2. TURNING LANES ARE NOT SHOWN.
3. REFER TO 12.0 FOR STREET CONNECTION STANDARDS.

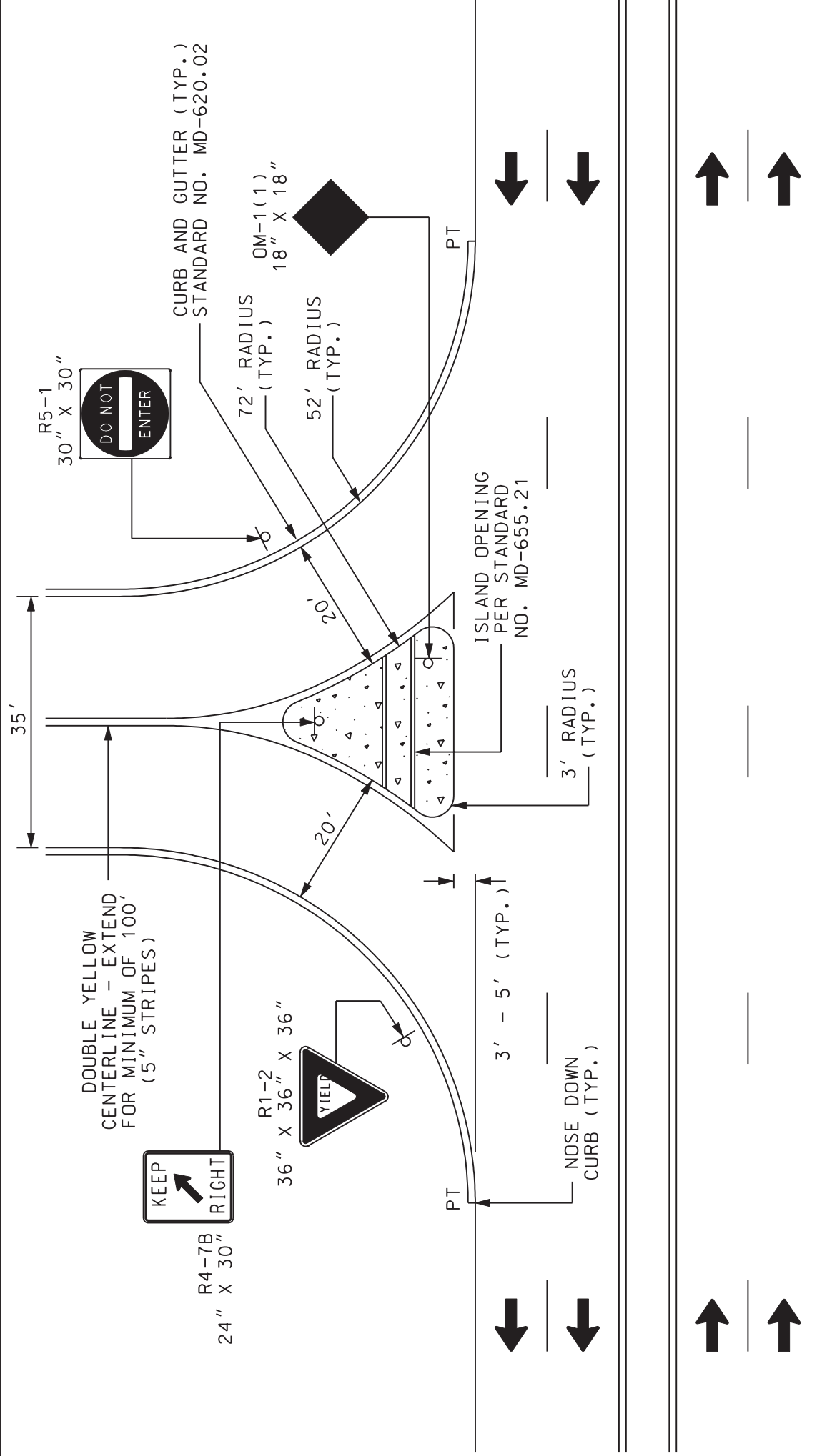
TYPICAL OPEN SECTION  
STREET CONNECTION  
ENGINEERING ACCESS PERMITS



NOTES:

1. FOR SIDEWALK SEE MD STANDARD NO. 655.14.
2. CONCRETE MEDIAN WILL BE A NOSE DOWN CURB TYPE ON APPROACH ENDS.
3. REFER TO 11.0 FOR ENTRANCE DESIGN STANDARDS.

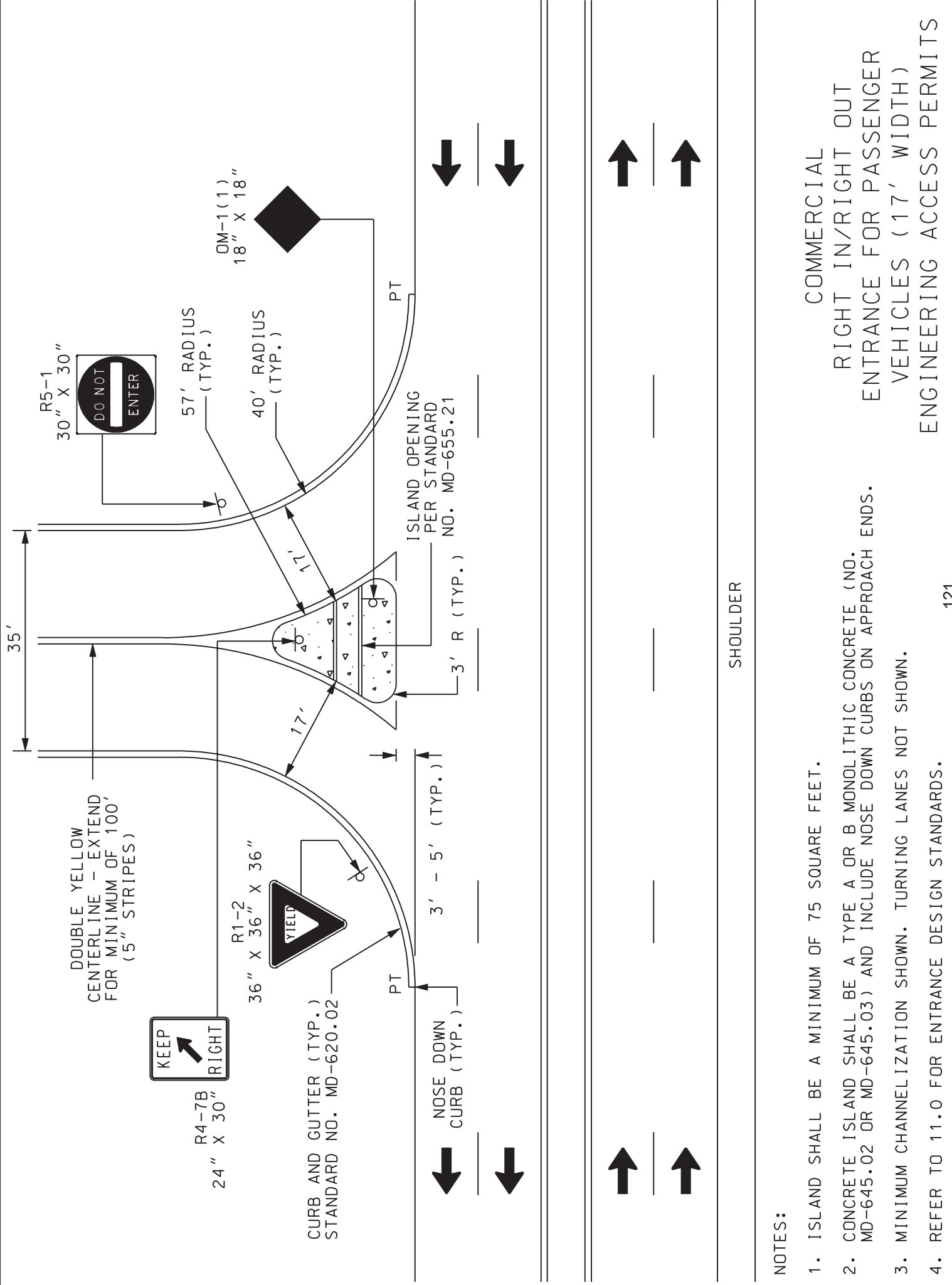
COMMERCIAL MONUMENTAL ENTRANCE  
ENGINEERING ACCESS PERMITS



NOTES:

- ISLAND SHALL BE A MINIMUM OF 75 SQUARE FEET.
- CONCRETE ISLAND SHALL BE A TYPE A OR B MONOLITHIC CONCRETE (NO. MD-645.02 OR MD-645.03) AND INCLUDE NOSE DOWN CURBS ON APPROACH ENDS.
- MINIMUM CHANNELIZATION SHOWN. TURNING LANES NOT SHOWN.
- REFER TO 11.0 FOR ENTRANCE DESIGN STANDARDS.

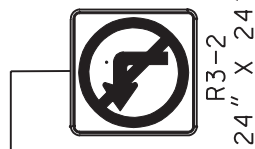
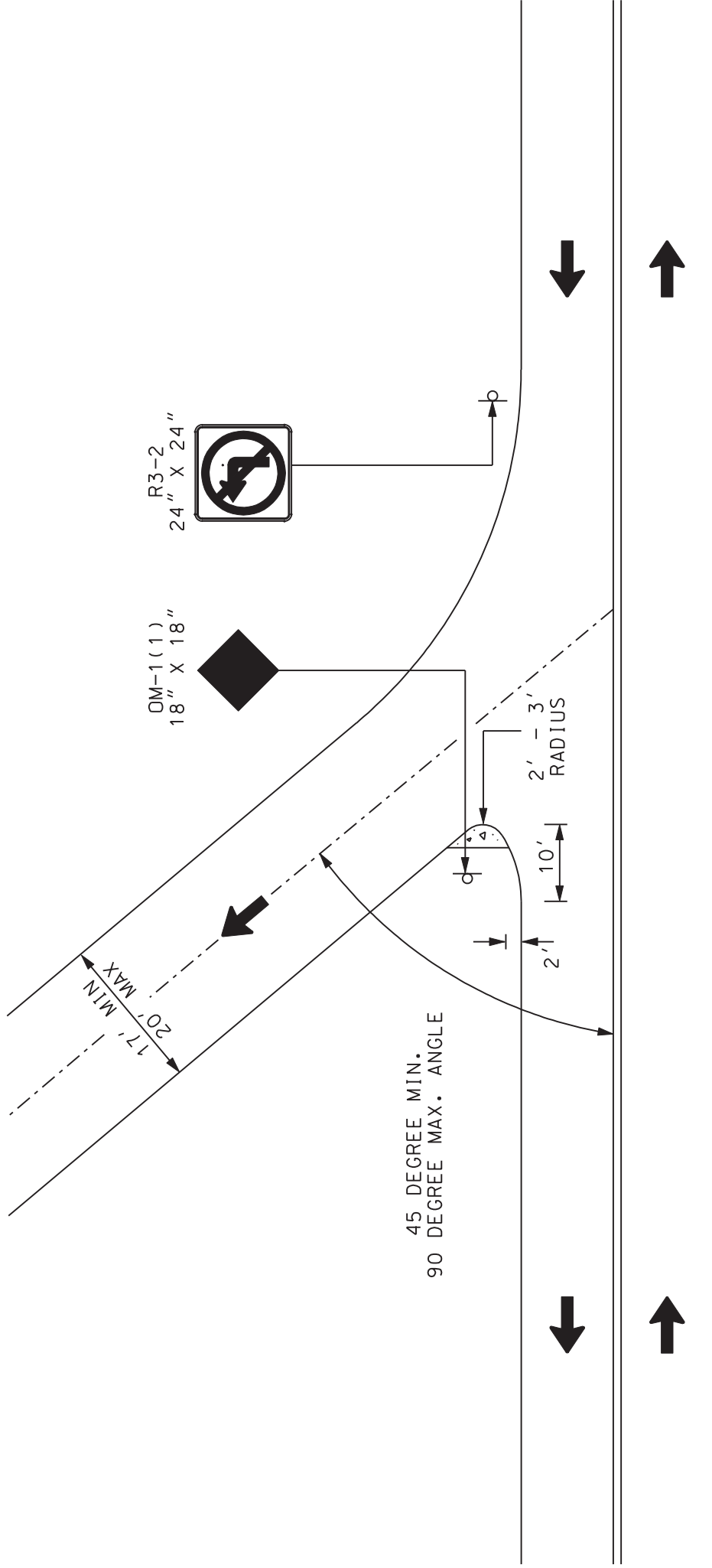
COMMERCIAL  
 RIGHT IN/RIGHT OUT  
 ENTRANCE FOR COMMERCIAL  
 VEHICLES (20' WIDTH)  
 ENGINEERING ACCESS PERMITS



NOTES:

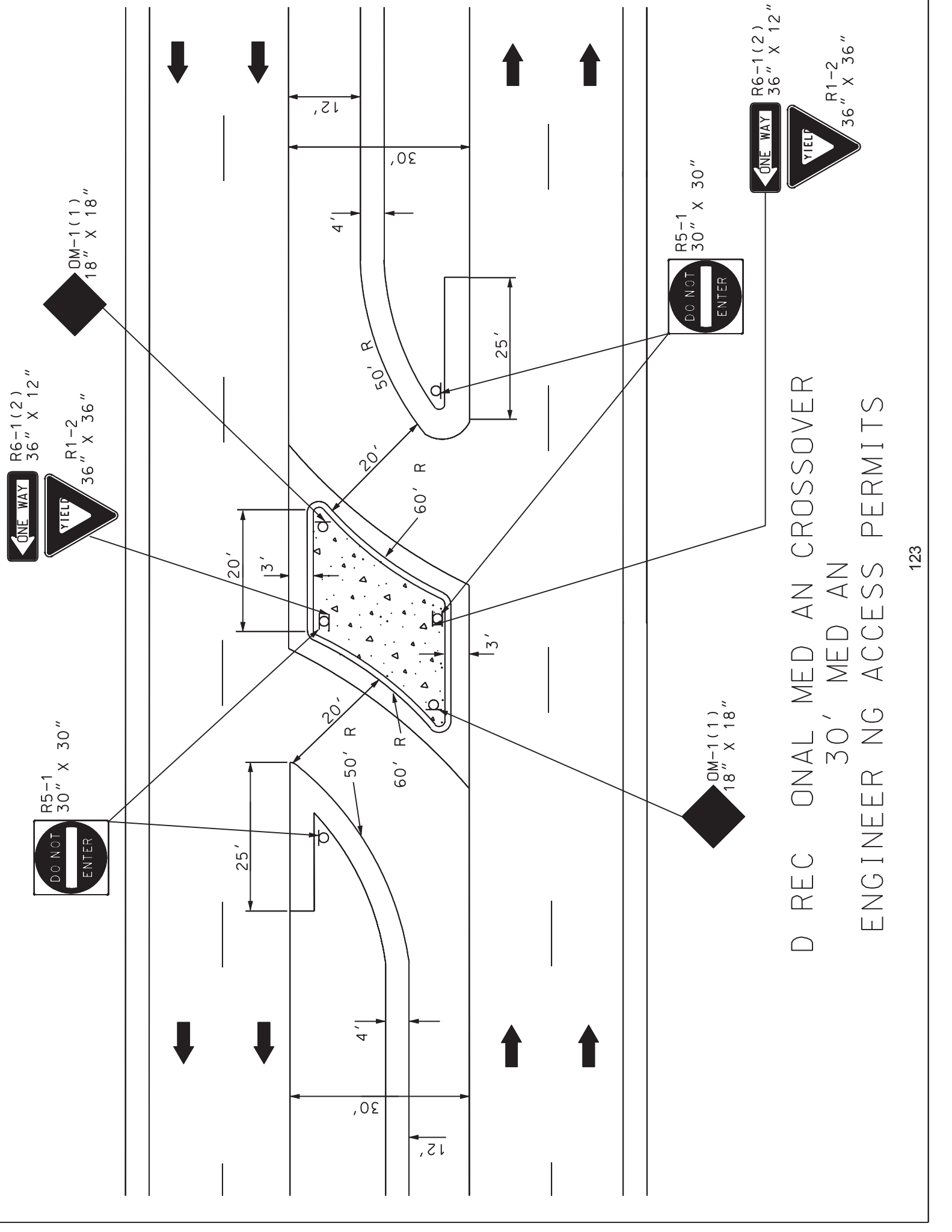
- ISLAND SHALL BE A MINIMUM OF 75 SQUARE FEET.
- CONCRETE ISLAND SHALL BE A TYPE A OR B MONOLITHIC CONCRETE (NO. MD-645.02 OR MD-645.03) AND INCLUDE NOSE DOWN CURBS ON APPROACH ENDS.
- MINIMUM CHANNELIZATION SHOWN. TURNING LANES NOT SHOWN.
- REFER TO 11.0 FOR ENTRANCE DESIGN STANDARDS.

COMMERCIAL  
 RIGHT IN/RIGHT OUT  
 ENTRANCE FOR PASSENGER  
 VEHICLES (17' WIDTH)  
 ENGINEERING ACCESS PERMITS

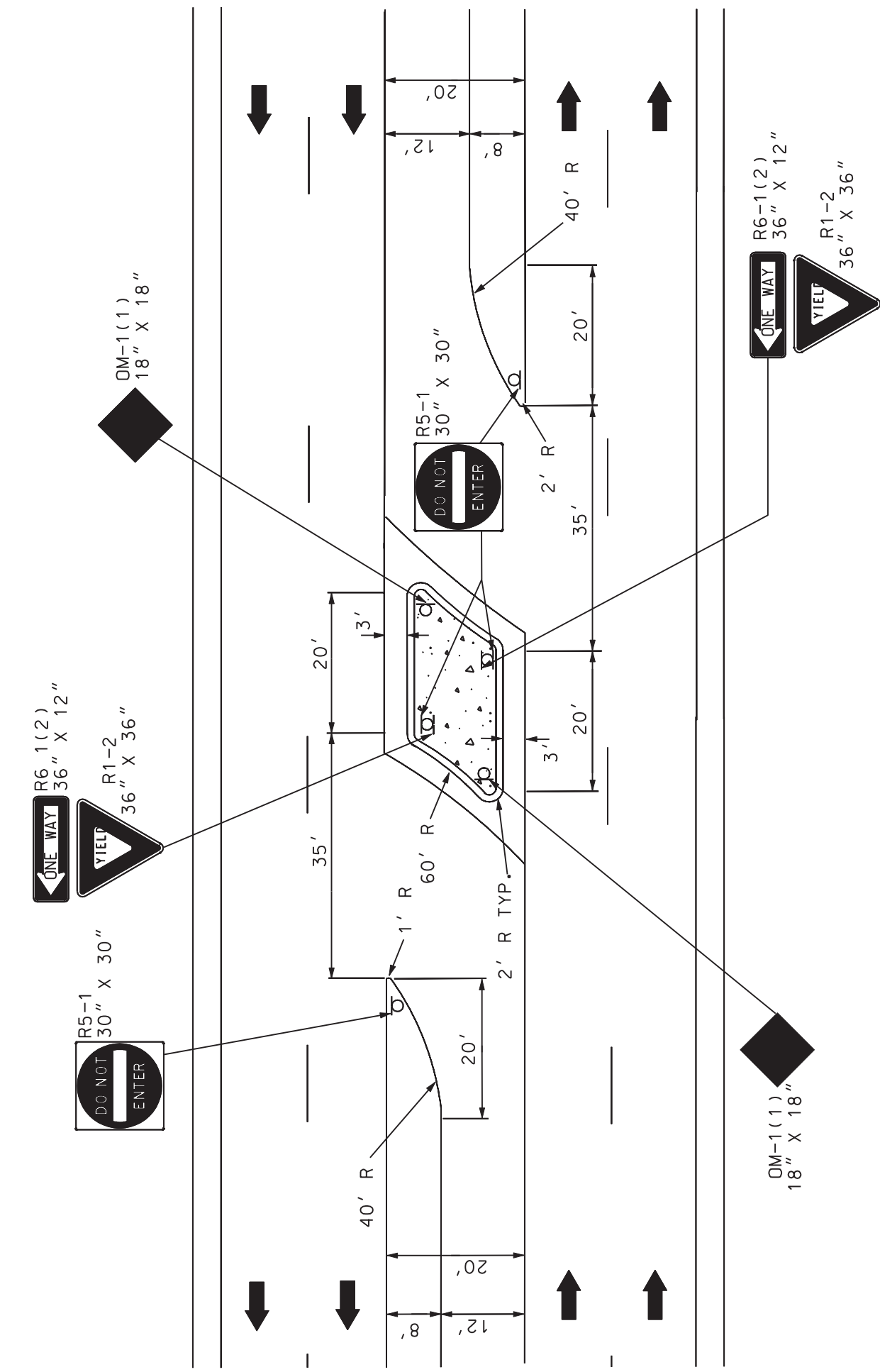


- NOTES:
1. TURNING LANES AND CHANNELIZATION ARE NOT SHOWN.
  2. REFER TO 11.0 FOR ENTRANCE DESIGN STANDARDS.

COMMERCIAL ONE-WAY  
 ENTRANCE ( INBOUND ONLY SHOWN )  
 ENGINEERING ACCESS PERMITS

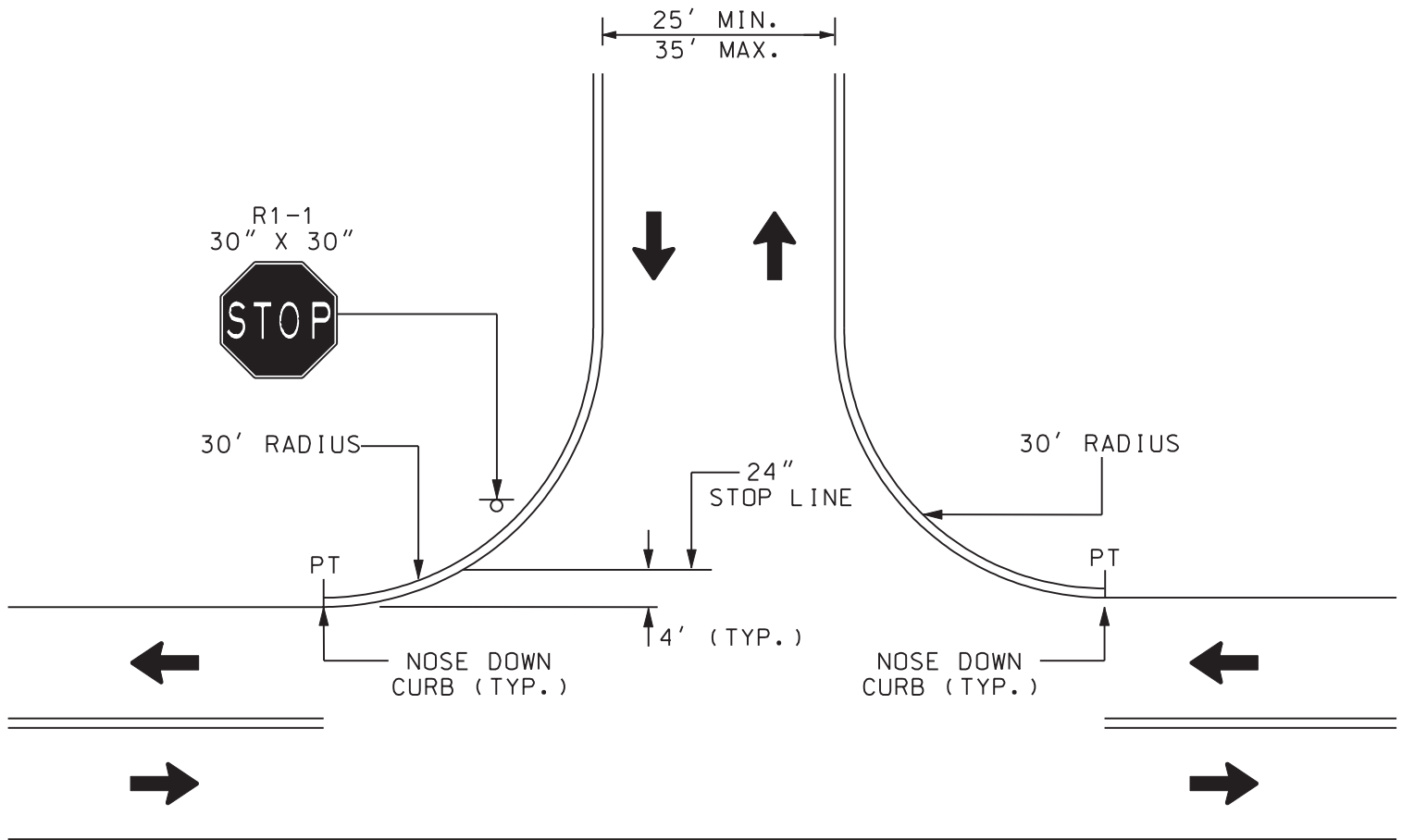


D REC ONAL MED AN CROSSOVER  
 30' MED AN  
 ENGINEER NG ACCESS PERMITS



D REC ONAL MED AN CROSSOVER  
 20' MEDIAN  
 ENGINEER NG ACCESS PERMITS





NOTES:

1. MINIMUM CHANNELIZATION IS SHOWN.
2. TURNING LANES ARE NOT SHOWN.
3. REFER TO 11.0 FOR ENTRANCE DESIGN STANDARDS.

COMMERCIAL  
TWO-WAY ENTRANCE  
ENGINEERING ACCESS PERMITS