


WRONG WAY FATALITIES

Investigations and Actions

Presented by:

Corren Johnson, District Engineer, MDOT SHA District 5

Kim Tran, Acting Deputy District Engineer, MDOT SHA District 5



November 14, 2018



Post Fatal Crash Review

District 5 Traffic Completes Study:

- Review initial police report
- Site visit
 - Check traffic control devices
 - Make observations
- Collect location specific crash data
- Determine need for improvements
- Recommended improvements installed



Wrong Way Fatalities – AA Co.

2012 - 2018

DATE	LOCATION	TIME OF DAY	ALCOHOL INVOLVED
January 2012	US 50 E of MD 424	3:30am	Yes (both drivers)
June 2012	I-97 N of MD 32	1:37am	No
May 2017	US 50 E of MD 450	1:25pm	No
July 2017	I-97 N of US 50	4:29am	Yes
July 2017	US 50 Bay Dale Dr. area	2:12am	Yes
September 2018	US 50 W of Severn River Bridge	12:54am	Yes



Statistics to Consider

- WWF approximately 0.4% of crashes Statewide (compared to 2.8% nationally)
- **67%** of WWF in AA Co. **involve alcohol** (compared to 60% nationally)
- 5 out of 6 WWF occurred from **12:30-4:30am**
- 4 out of 6 WWF drivers **aged 19 – 25**
- 4 out of 6 WWF drivers **female**

** Wrong Way Fatalities (WWF)

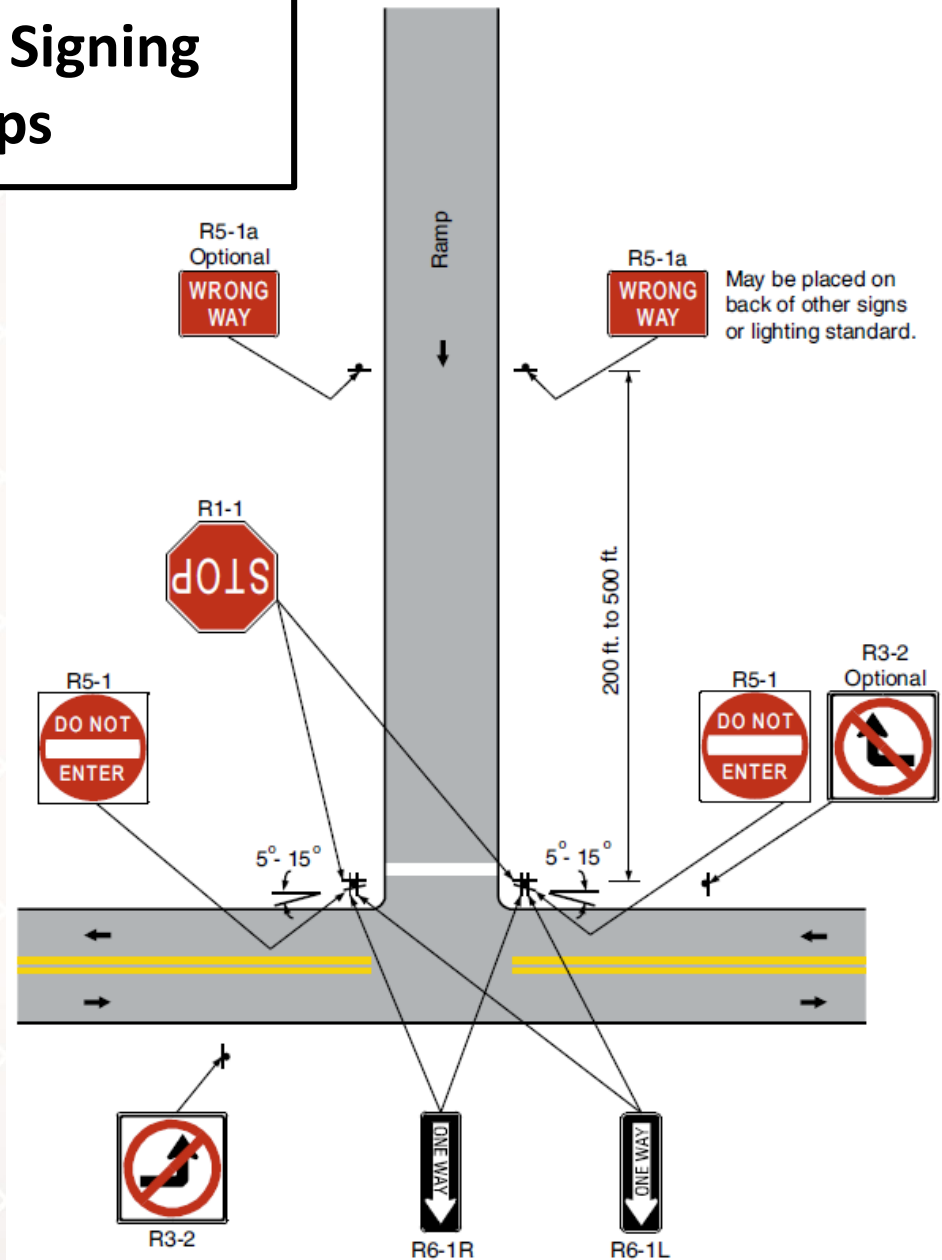
Example of Wrong Way Signing Placement at Ramps

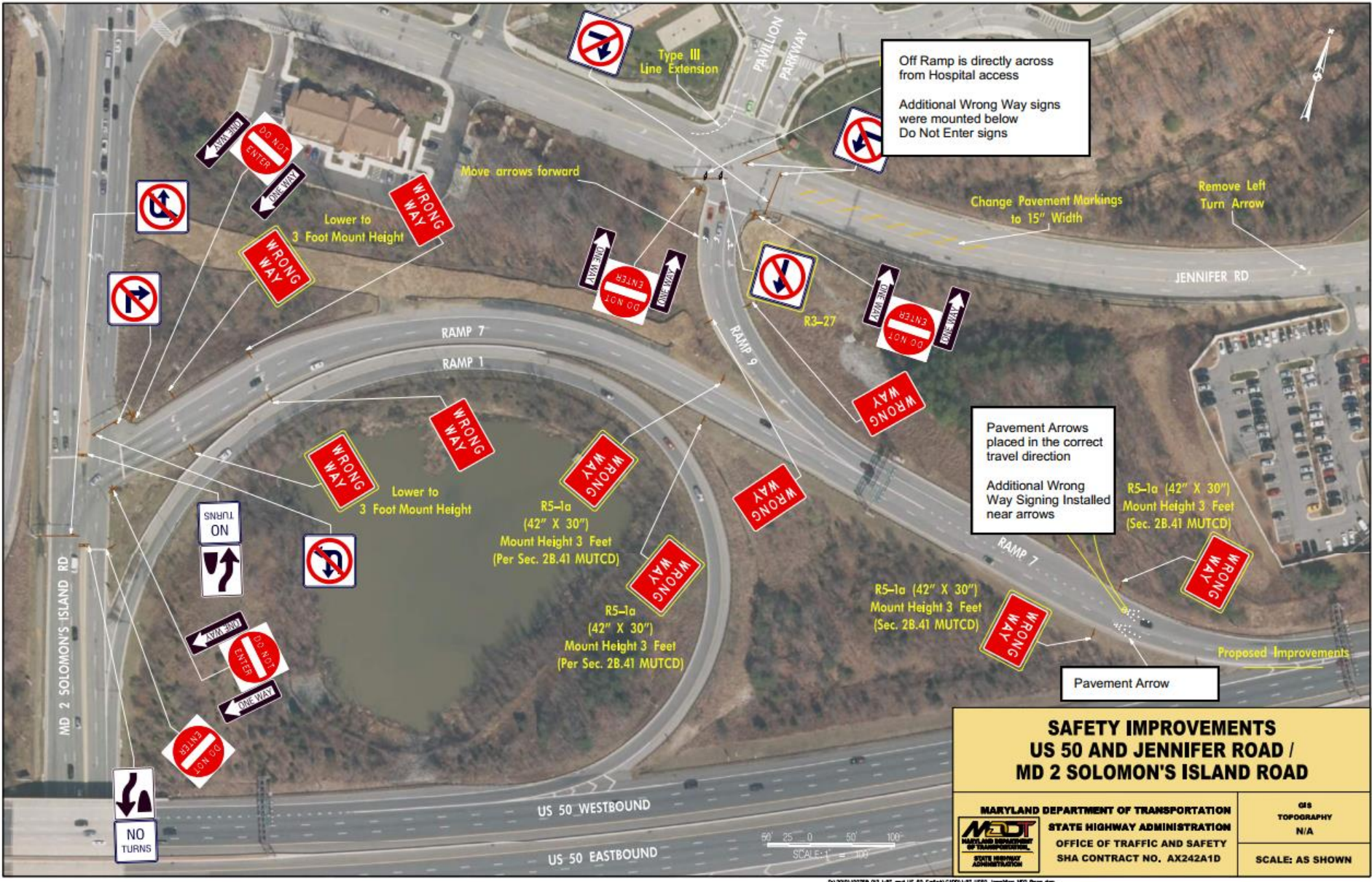
Legend
 → Direction of travel
 ↗ Sign

MARYLAND
 Manual on Uniform Traffic Control Devices
 for Streets and Highways
2011 Edition



Maryland State Highway Administration





Off Ramp is directly across from Hospital access

Additional Wrong Way signs were mounted below Do Not Enter signs

Change Pavement Markings to 15" Width

Remove Left Turn Arrow

Pavement Arrows placed in the correct travel direction

Additional Wrong Way Signaling Installed near arrows

R5-1a (42" X 30") Mount Height 3 Feet (Sec. 2B.41 MUTCD)

R5-1a (42" X 30") Mount Height 3 Feet (Sec. 2B.41 MUTCD)

Proposed Improvements

Pavement Arrow

SAFETY IMPROVEMENTS US 50 AND JENNIFER ROAD / MD 2 SOLOMON'S ISLAND ROAD

MARYLAND DEPARTMENT OF TRANSPORTATION
STATE HIGHWAY ADMINISTRATION
OFFICE OF TRAFFIC AND SAFETY
SHA CONTRACT NO. AX242A1D

GIS TOPOGRAPHY
N/A
SCALE: AS SHOWN





Jennifer Road

Jennifer Road





Jennifer Road



Jennifer Road



Jennifer Road



WRONG
WAY

WRONG
WAY

Jennifer Road



Jennifer Road

Pavement Arrows placed in correct travel direction

Wrong Way signs to be upgraded to LED

Mount Height 3 Feet
(Per Sec. 2B.41 MUTCD)

US 50 WESTBOUND

US 50 EASTBOUND



Mount Height 3 Feet
(Per Sec. 2B.41 MUTCD)

Wrong Way Arrows



Place on Vertical Column
of Overhead Sign



BUSCHS FRONTAGE RD

24 Inch Wide
Stop Line

SAFETY IMPROVEMENTS US 50 AND BUSCHS FRONTAGE ROAD

MARYLAND DEPARTMENT OF TRANSPORTATION
STATE HIGHWAY ADMINISTRATION
OFFICE OF TRAFFIC AND SAFETY
SHA CONTRACT NO. AX242A1D

GIS
TOPOGRAPHY
N/A

SCALE: AS SHOWN



July 2009 (photo captured)



Buschs Frontage Road



October 2017 (photo captured)



Buschs Frontage Road



Buschs Frontage Road



Buschs Frontage Rd
Pointless Forest Trl

DO NOT
ENTER
WRONG
WAY

DO NOT
ENTER
WRONG
WAY

Buschs Frontage Road



Buschs Frontage Road



Buschs Frontage Road

Yellow Extension Lines



US 50 at Whitehall Road



Improvement Summary

- 22 interchange sites along I-97 & US 50 (Anne Arundel County)
- Remaining improvements to be installed Winter 2018



Thank you for your time!

This presentation and photos can be found online:

- Go to www.roads.maryland.gov
- Search for “District 5”
- Click on “Maryland State Highway Administration – Districts Page – District 5”