

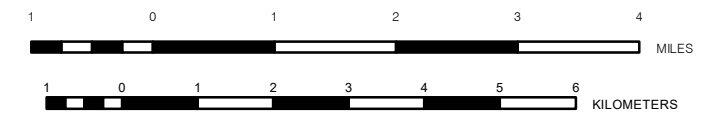
TRUCK VOLUME MAP
2020-2022
ANNUAL AVERAGE DAILY TRAFFIC
BALTIMORE
COUNTY
MARYLAND

POPULATION 805,029 (2010)

PREPARED BY THE
MARYLAND DEPARTMENT OF TRANSPORTATION
 STATE HIGHWAY ADMINISTRATION

IN COOPERATION WITH THE
UNITED STATES DEPARTMENT OF TRANSPORTATION
 FEDERAL HIGHWAY ADMINISTRATION

MAP SCALE
 1:100,000



PUBLISHED: 2023

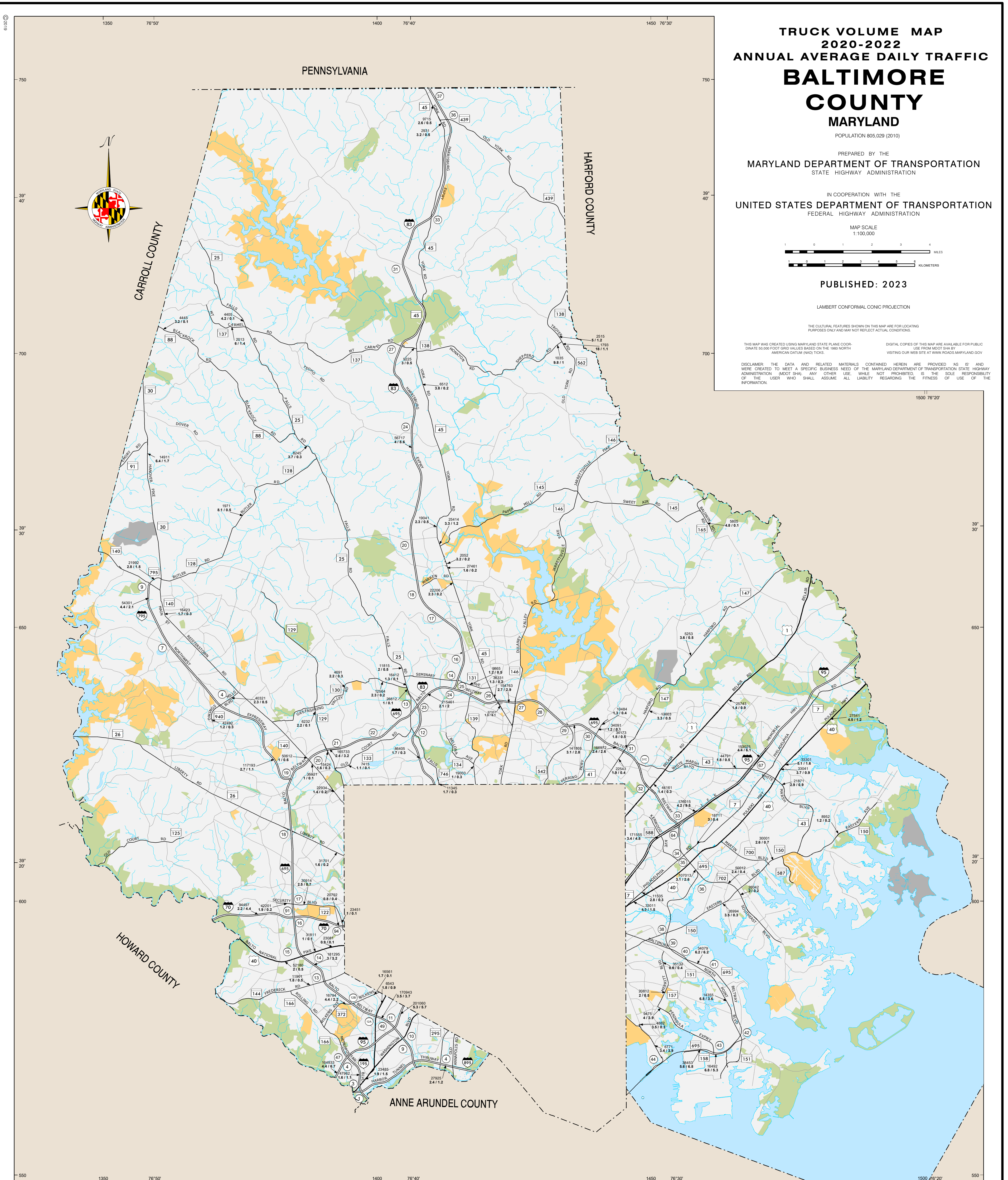
LAMBERT CONFORMAL CONIC PROJECTION

THE CULTURAL FEATURES SHOWN ON THIS MAP ARE FOR LOCATING PURPOSES ONLY AND MAY NOT REFLECT ACTUAL CONDITIONS

THIS MAP WAS CREATED USING MARYLAND STATE PLANE COORDINATE 86,000 FOOT GRID VALUES BASED ON THE 1983 NORTH AMERICAN DATUM (NAD83) TICS.

DIGITAL COPIES OF THIS MAP ARE AVAILABLE FOR PUBLIC USE FROM MDOT SHA BY VISITING OUR WEB SITE AT WWW.ROADS.MARYLAND.GOV

DISCLAIMER: THE DATA AND RELATED MATERIALS CONTAINED HEREIN ARE PROVIDED AS IS AND WERE CREATED TO MEET A SPECIFIC BUSINESS NEED OF THE MARYLAND DEPARTMENT OF TRANSPORTATION STATE HIGHWAY ADMINISTRATION (MDOT SHA). ANY OTHER USE, WHILE NOT PROHIBITED, IS THE SOLE RESPONSIBILITY OF THE USER WHO SHALL ASSUME ALL LIABILITY REGARDING THE FITNESS OF USE OF THE INFORMATION.



LEGEND

- Interstate Highway
- US Highway
- State Highway
- 9972 Annual Average Daily Traffic (AADT)
- 7.6 / 2.2 Percent Single Units Class 4-7/
Percent Combination Units Class 8-13

The information in these maps is provided as a public service by the Maryland Department of Transportation State Highway Administration (MDOT SHA).

NOTICE

Traffic count figures are estimates. They are derived by taking 48 hour machine count data and applying factors from permanent count stations. Restriction of Liability: MDOT SHA makes no claims, promises or guarantees about the accuracy, completeness, or adequacy of the contents of these maps and expressly disclaims liability for any errors and omissions in the contents of these documents.

