

**9** Watch for wet pavement, wet leaves, and loose gravel.



**11** Watch for dogs and other animals.



**10** Stay alert for cars leaving driveways.



**12** Watch for opening doors of parked cars.



# RULES OF THE ROAD



- Follow the rules of the road, bikes are considered vehicles while riding on the road.
- If you are under 16, you must wear a helmet.
- **Stop** and **look** in all directions before entering a street from driveways, a curb or another street.
- Drive on the right with the flow of traffic. **Never** go against traffic.
- Pedal in single file. It's the best way to go.
- **Don't** weave in and out of traffic or between parked cars.
- Maintain control of your bike when traveling downhill. Take it easy.
- Pull completely off the road when you stop to rest or talk.
- Always ride in a straight line.
- Expect the unexpected.
- Know what your bike can and cannot do.
- **Inspect** your bike. Don't let a breakdown spoil your day.

Maryland State Highway Administration  
Bicycle and Pedestrian Coordinator  
707 N. Calvert Street  
P.O. Box 717  
Baltimore, MD 21203  
(410) 545-5656  
1-800-252-8776  
bikes@sha.state.md.us

TIPS FOR

**S A F E**

**BICYCLING**



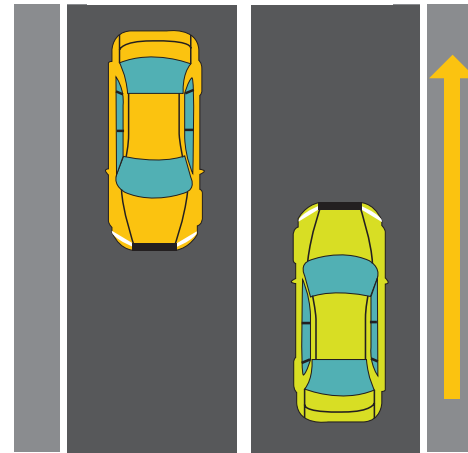
**1** Wear a helmet with a *hard shell*.



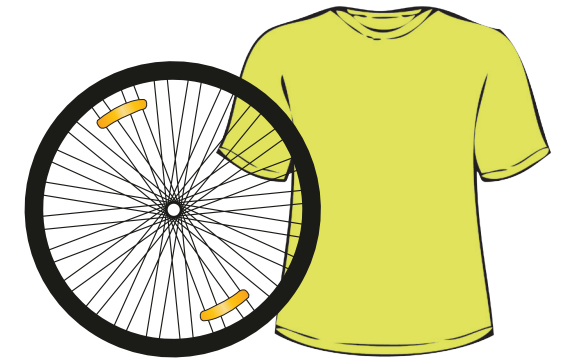
**3** Obey all signs and signals.



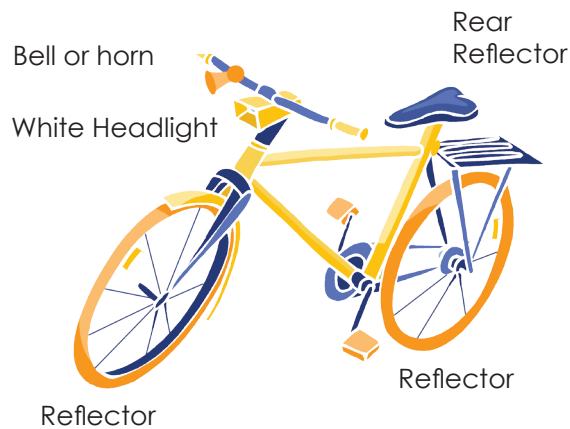
**5** Ride with traffic in single file.



**7** Be bright at night. Wear bright clothes and make sure you have lights and reflectors on your bike.



**2** Ride the properly sized bike. It should have a bell or horn, reflectors and a headlight for night riding.



**4** Don't carry passengers on your bike.



**6** Signal other roadway users.



**8** Watch out for storm drains.

