

Work Zone Traffic Control Inspection Ratings Report 2005

State Maintained Highway System - IS, US, MD



Prepared By

**Traffic Development and Support Division
Office of Traffic and Safety**

TABLE OF CONTENTS

Summary..... 1
 Inspection Ratings..... 1
 Concerns..... 2
Work Zone Traffic Control Inspection Rating Results..... 3
 Average District WZTC Setup Inspection Ratings For All Types of Work..... 4
 District 1 WZTC Ratings..... 5
 District 2 WZTC Ratings..... 6
 District 3 WZTC Ratings..... 7
 District 4 WZTC Ratings..... 8
 District 5 WZTC Ratings..... 9
 District 6 WZTC Ratings..... 10
 District 7 WZTC Ratings..... 11

SUMMARY

This report is intended to evaluate the performance of the Maryland State Highway Administration (SHA) and track our progress toward safer work zones. Our aim is to have continuous improvement in this important area.

Inspection Ratings

This report summarizes the work zone traffic control inspection ratings for all Districts. The Maryland State Highway Administration (SHA) conducted approximately **2082** work zone traffic control inspections in 2005. The inspections show that overall ratings in the Districts range from “B-” to “A”. However, the average overall rating for all the Districts is “A-”.

Concerns

The following is a summary of the main concerns related to temporary traffic control (TTC) setups based on the review of inspection reports and discussions with TTC inspectors group.

“Some 14 people lost their lives in work zone accidents in Maryland in 2005.”

Signs

- SHA Typical or TCP not followed
- Poor reflectivity
- Wrong sign type
- Improper sign legend (dirty, damaged)
- Incorrect message
- Inappropriate/contradictory signs not covered/removed
- Improper sign support
- Omitted Signs

Arrow Panels

- Missing arrow panel
- Missing bulbs

Portable Variable Message Signs

- Incorrect, non-relevant message
- Malfunctioning elements (LCDs)

Channelizing devices

- Incorrect spacing
- Damaged, dirty or non-reflective
- Missing or poor reflectivity

General

- Traffic control devices used are not NCHRP-350 approved
- Incorrect taper
- Improper barrier end treatment
- Use of non-certified flagger or no flaggers
- Non-standard pavement markings
- Mowers without lights and traveling against traffic

WORK ZONE TRAFFIC CONTROL (WZTC) INSPECTION RATING RESULTS

“SHA conducted approximately 2082 work zone traffic control inspections in 2005.”

In 2005, the Maryland State Highway Administration (SHA) conducted approximately **2082** work zone traffic control inspections. Typically, SHA District inspectors performed these inspections. In some cases, traffic engineers in the Districts and/or the Office of Traffic & Safety were also involved in these inspections. The inspections were performed for different types of work zones, but primarily for construction, maintenance, utilities, and traffic.

The following is a listing of projects/jobs, the approximate number of inspections that were recorded for each, and the corresponding rating.

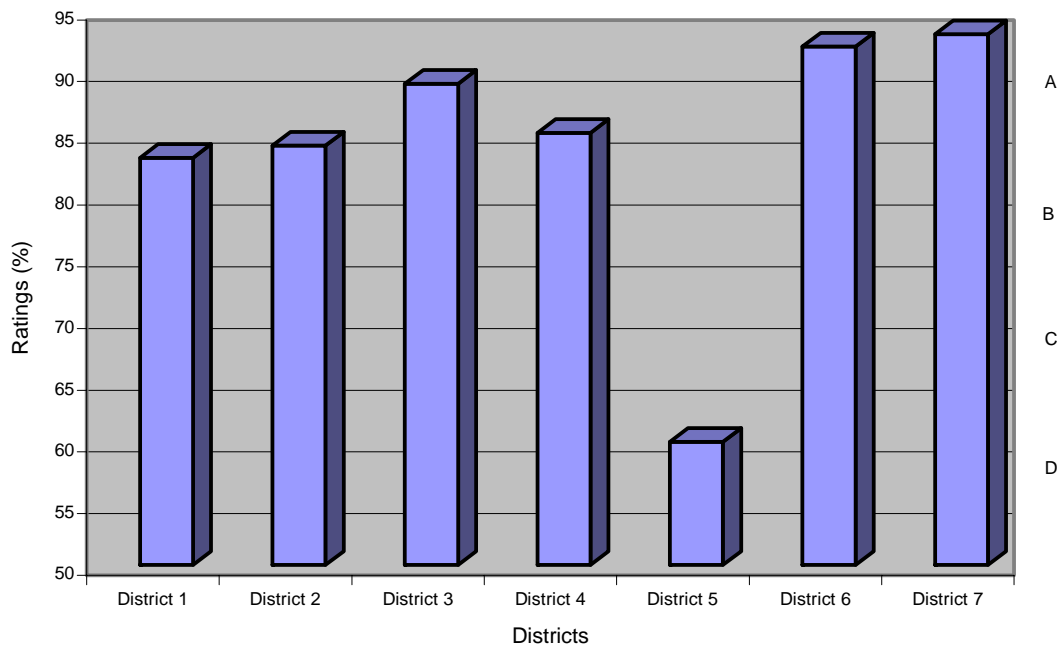
“The average overall rating for all the Districts is ‘A-’.”

Type of Work	Number of Inspections*	Rating
Construction	1387	A-
Maintenance	343	A-
Traffic	37	B-
Utilities	253	B
Other	60	B-
TOTAL	2082	A-

* Districts x and x submitted information that was not partitioned into “types of work”. They are, however, included in the total.

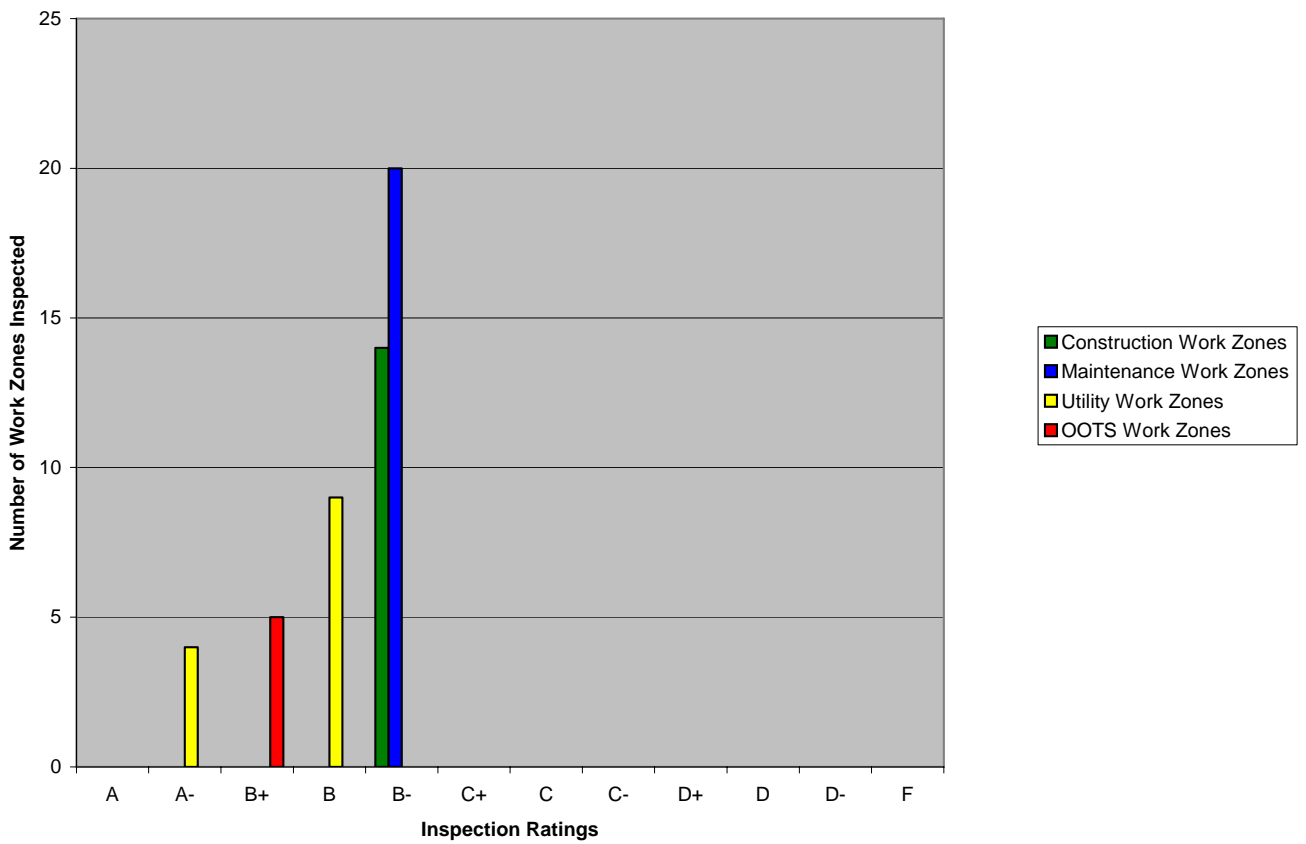
This report summarizes the ratings received by the different types of work zones in each District. The goal was to achieve an overall minimum grade of “B+” in each District. The inspections have revealed that the overall ratings in the Districts range from “**B-**” to “**A-**”. The average overall rating for all the Districts is “**A-**” (an **improvement** over 2004), with a corresponding numerical score of **90%**.

AVERAGE DISTRICT WZTC SETUP INSPECTION RATINGS FOR ALL TYPES OF WORK, JANUARY - DECEMBER 2005



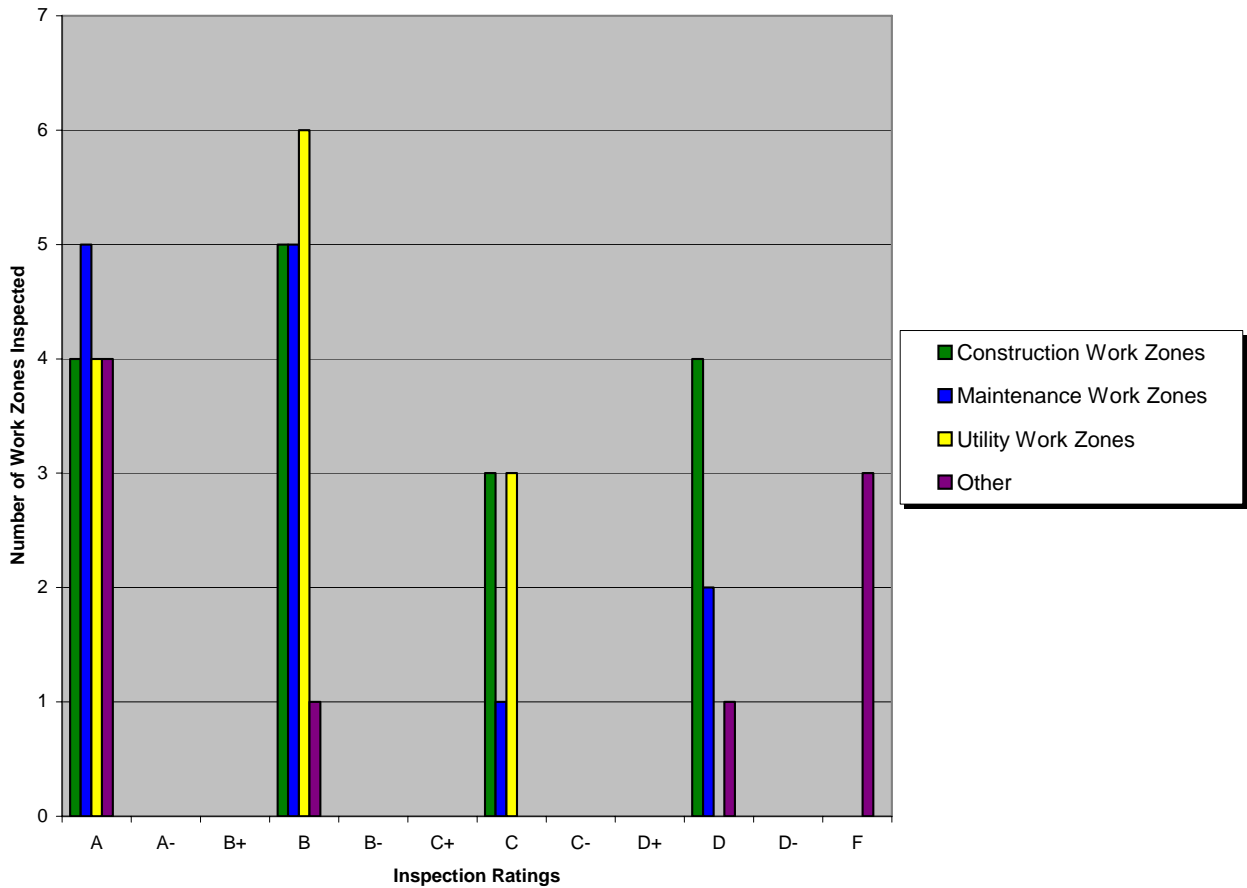
DISTRICTS	RATING %
DISTRICT 1	83
DISTRICT 2	84
DISTRICT 3	89
DISTRICT 4	85
DISTRICT 5	XX
DISTRICT 6	92
DISTRICT 7	93

WZTC Ratings Summary (District - 1)
Jan - Dec 2005



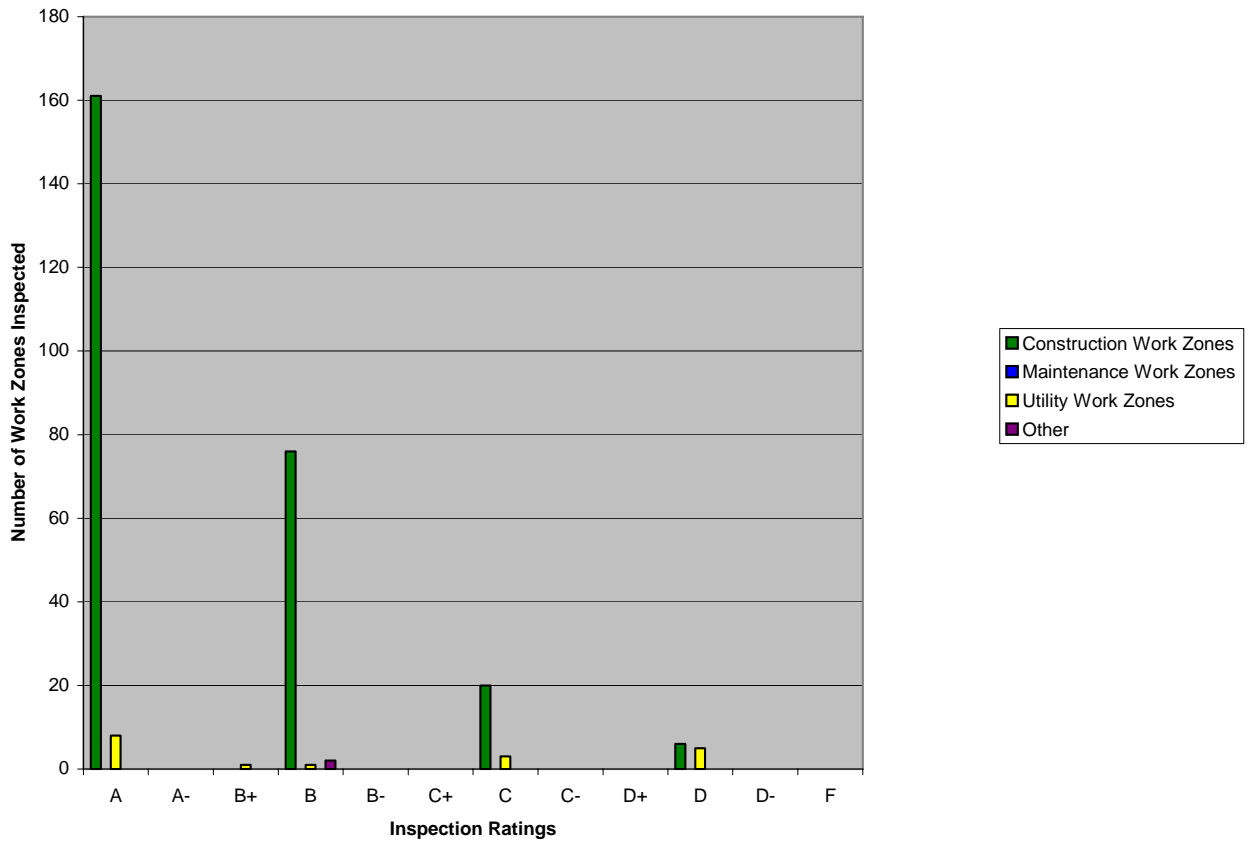
Ratings	Different WZ Types			
	Construction	Maintenance	Utility	OOTS
A+	0	0	0	0
A	0	0	0	0
A-	0	0	4	0
B+	0	0	0	5
B	0	0	0	0
B-	14	20	0	0
C+	0	0	0	0
C	0	0	0	0
C-	0	0	0	0
D+	0	0	0	0
D	0	0	0	0
D-	0	0	0	0
F	0	0	0	0
Total	14	20	4	5

WZTC Ratings Summary (District - 2)
Jan - Dec 2005



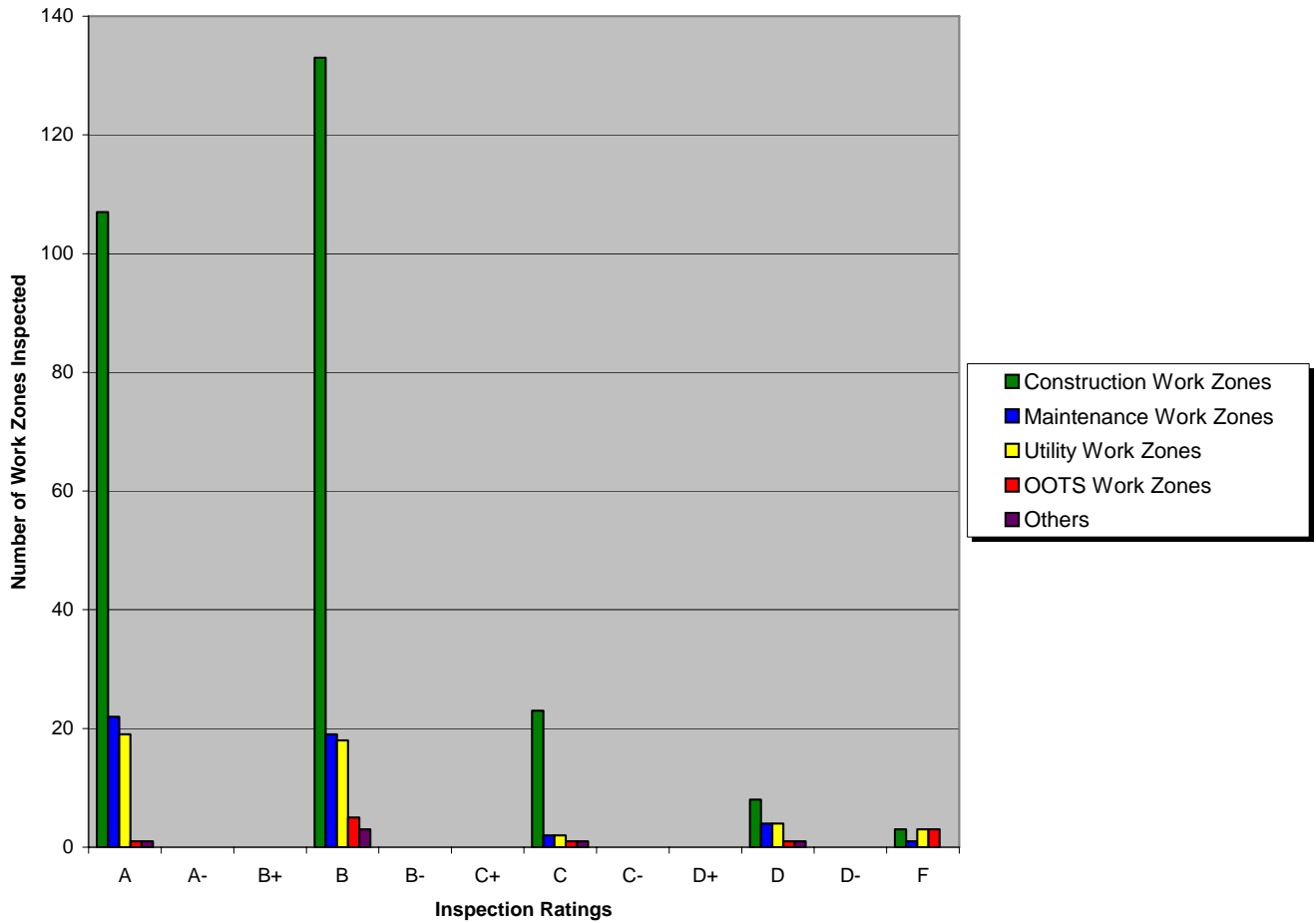
Ratings	Different WZ Types			
	Construction	Maintenance	Utility	Other
A+	0	0	0	0
A	22	5	4	4
A-	0	0	0	0
B+	0	0	0	0
B	5	5	6	1
B-	0	0	0	0
C+	0	0	0	0
C	1	1	3	0
C-	0	0	0	0
D+	0	0	0	1
D	1	2	0	0
D-	0	0	0	0
F	0	0	0	3
Total	29	13	13	9

WZTC Ratings Summary (District - 3)
Jan - Dec 2005



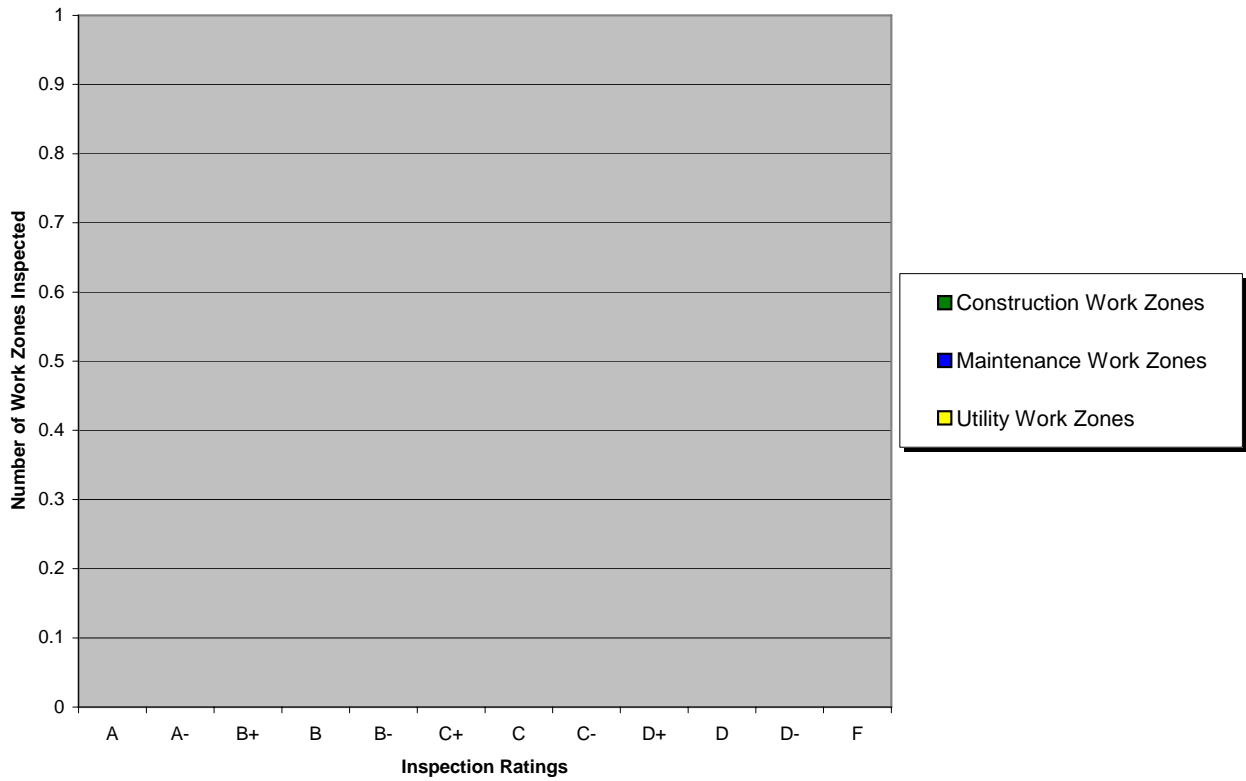
Ratings	Different WZ Types		
	Construction	Maintenance	Utility
A+	0	0	1
A	161	0	8
A-	0	0	0
B+	0	0	1
B	76	0	1
B-	0	0	0
C+	0	0	0
C	20	0	3
C-	0	0	0
D+	0	0	0
D	6	0	5
D-	0	0	0
F	0	0	0
Total	263	0	19

WZTC Ratings Summary (District - 4)
Jan - Dec 2005



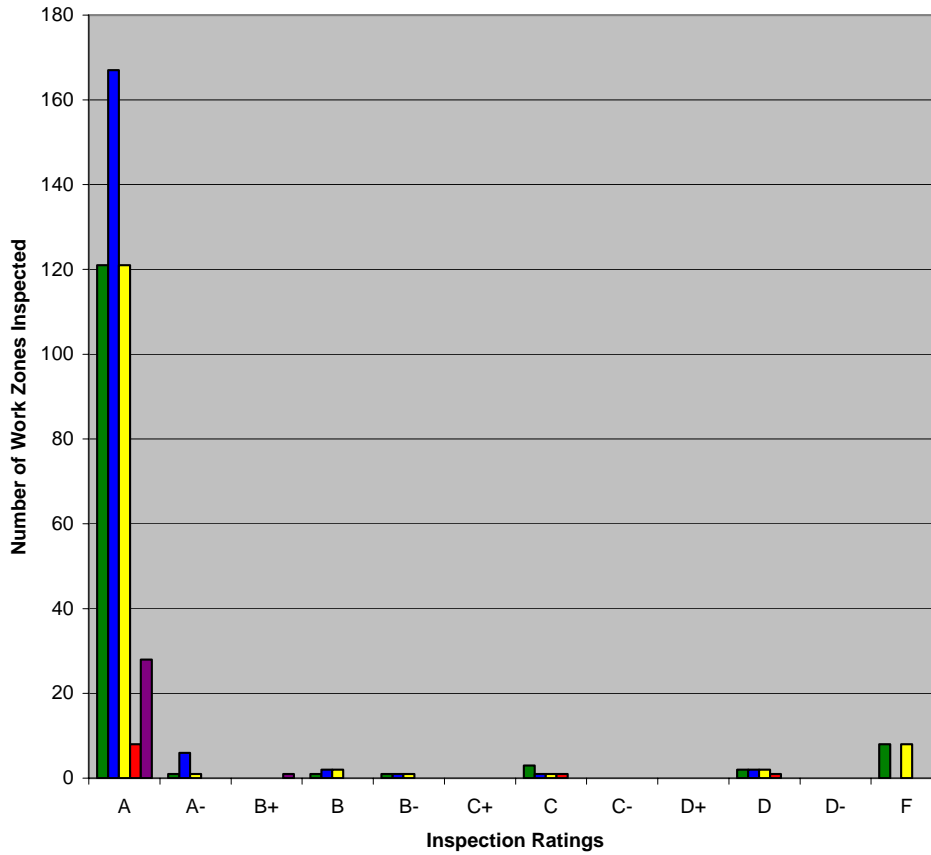
Ratings	Different WZ Types			OOTS Ratings
	Construction	Maintenance	Utility	
A+	0	0	0	0
A	107	22	19	1
A-	0	0	0	0
B+	0	0	0	0
B	133	19	18	5
B-	0	0	0	0
C+	0	0	0	0
C	23	2	2	1
C-	0	0	0	0
D+	0	0	0	0
D	8	4	4	1
D-	0	0	0	0
F	3	1	3	3
Total	0	0	0	0

WZTC Ratings Summary (District - 5)
Jan - Dec 2005



Ratings	Different WZ Types		
	Construction	Maintenance	Utility
A+	0	0	0
A	0	0	0
A-	0	0	0
B+	0	0	0
B	0	0	0
B-	0	0	0
C+	0	0	0
C	0	0	0
C-	0	0	0
D+	0	0	0
D	0	0	0
D-	0	0	0
F	0	0	0
Total	0	0	0

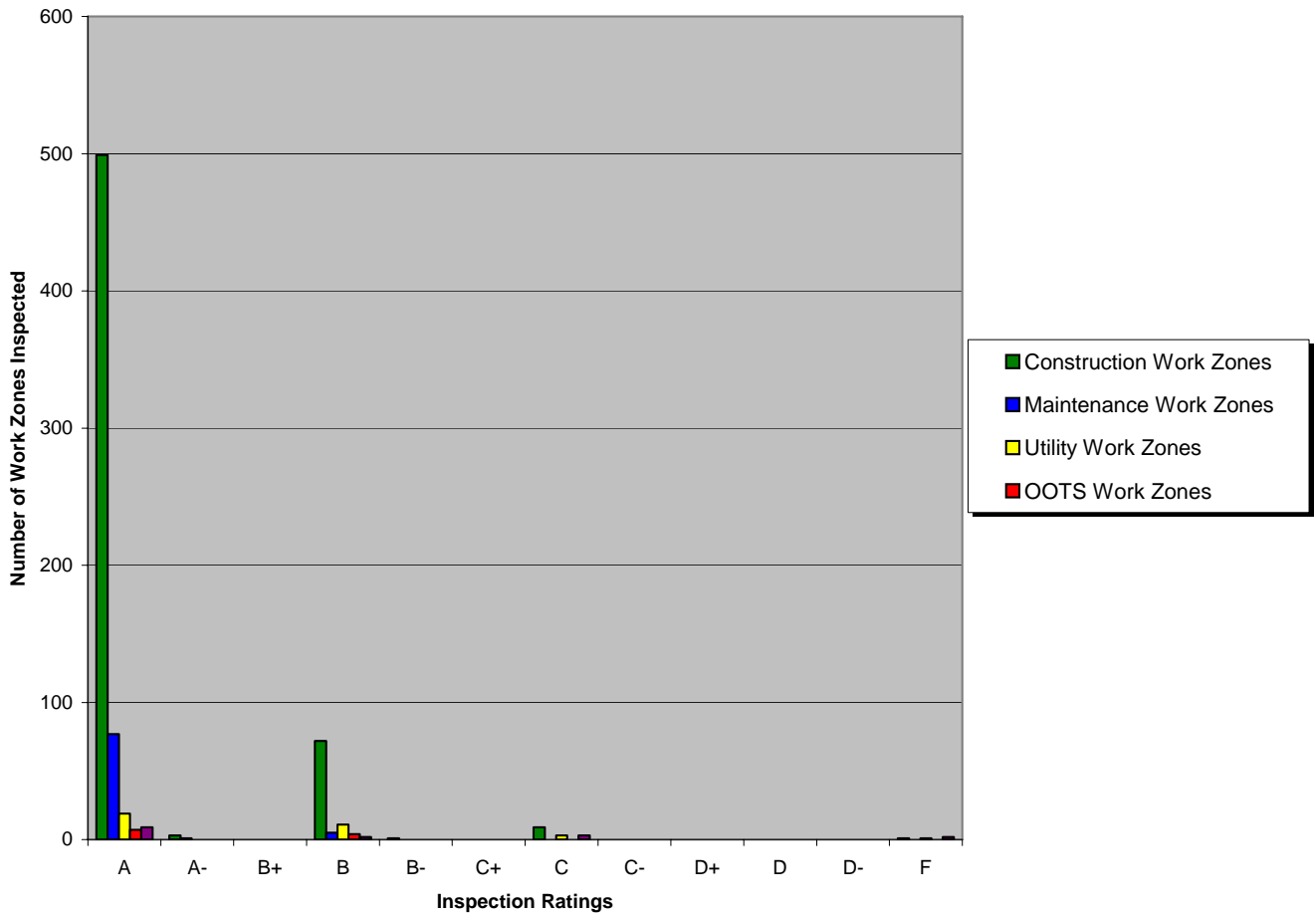
WZTC Ratings Summary (District - 6)
Jan - Dec 2005



Ratings	Different WZ Types			OOTS Ratings
	Construction	Maintenance	Utility	
A+	0	0	0	0
A	200	167	121	8
A-	8	6	1	0
B+	3	0	0	0
B	4	2	1	0
B-	0	1	1	0
C+	0	0	0	0
C	1	3	3	1
C-	0	0	0	0
D+	0	0	0	0
D	0	2	2	1
D-	0	0	0	0
F	4	0	8	0
Total	220	179	137	10

* District 6 did not provide categorical breakdowns of the inspections performed in 2004, so this data is unavailable.

WZTC Ratings Summary (District - 7)
Jan - Dec 2005



Ratings	Different WZ Types			OOTS Ratings
	Construction	Maintenance	Utility	
A+	2	0	0	0
A	499	77	19	7
A-	3	1	0	0
B+	0	0	0	0
B	72	5	11	4
B-	1	0	0	0
C+	0	0	0	0
C	9	0	3	0
C-	0	0	0	0
D+	0	0	0	0
D	0	0	0	0
D-	0	0	0	0
F	1	0	1	0
Total	587	83	34	11