



# **MDOT State Highway Administration**

**Structural Materials and Pavement  
Markings Division  
METALS TEAM**



## Metals Team Contact Information

[metals@mdot.Maryland.gov](mailto:metals@mdot.Maryland.gov)

**Jeffro Johnston, CWI** 443-977-0497 [JJohnston@mdot.Maryland.gov](mailto:JJohnston@mdot.Maryland.gov)

Metal & Coatings Engineer

**Jeffrey Rands, CWI** 410-816-5326 [JRands@mdot.Maryland.gov](mailto:JRands@mdot.Maryland.gov)

Metal & Coatings Engineer

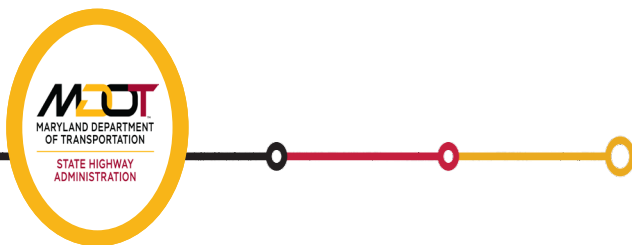
**Chase Fowler** 301-875-5679 [CFowler2@mdot.Maryland.gov](mailto:CFowler2@mdot.Maryland.gov)

Metal & Coatings Engineer

**Bryan Hines, CWI** 410-409-7685

[BHines@mdot.Maryland.gov](mailto:BHines@mdot.Maryland.gov)

Metals Team Leader



## Metals Team Contact Information

### Structural Materials Pavement Markings Division Chief

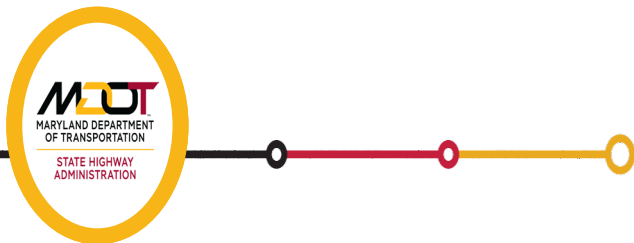
David Malburg, P.E. 443-572-5298

[DMalburg@mdot.Maryland.gov](mailto:DMalburg@mdot.Maryland.gov)

### Assistant Division Chief

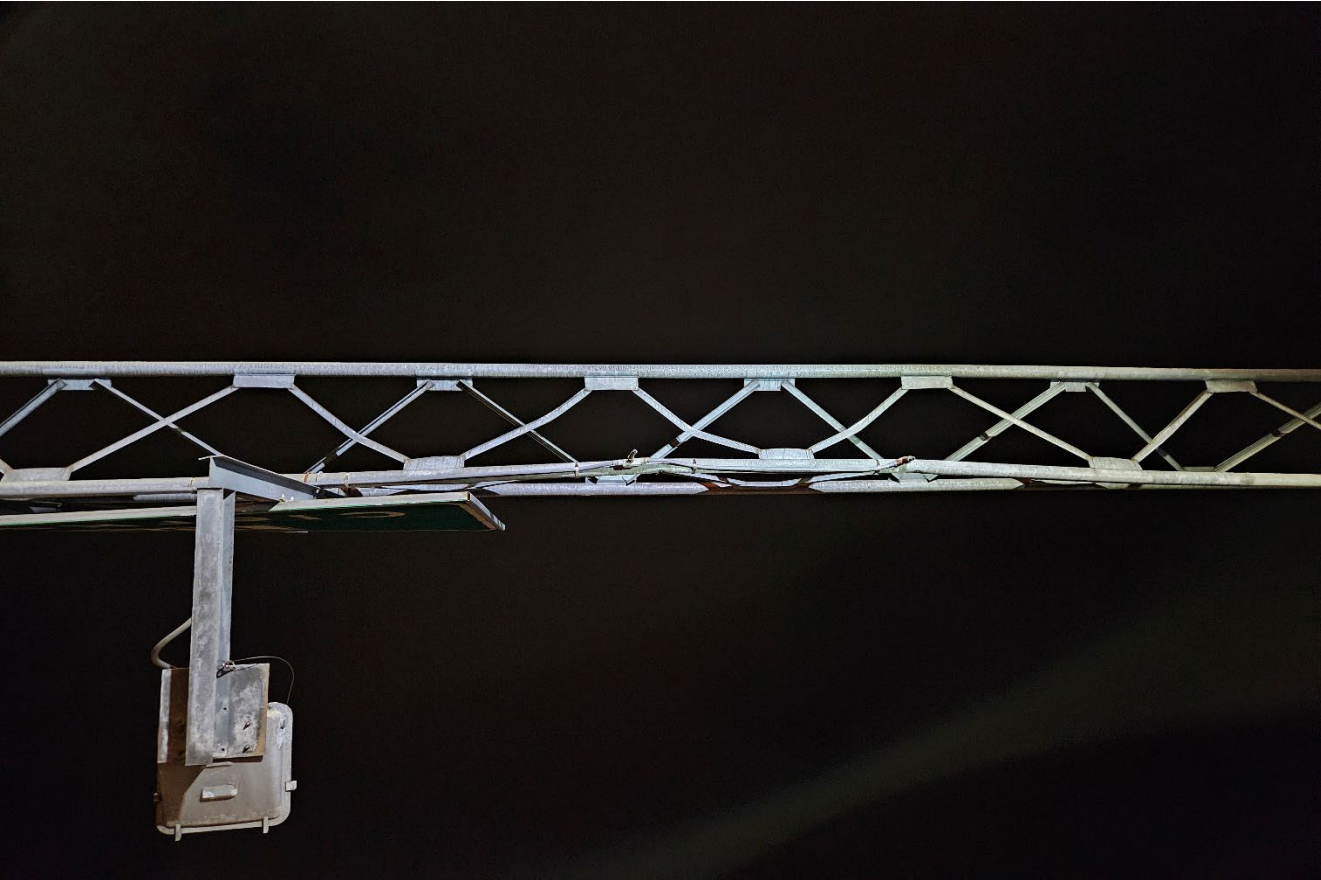
Timothy Howard 443-572-5278

[THoward1@mdot.Maryland.gov](mailto:THoward1@mdot.Maryland.gov)



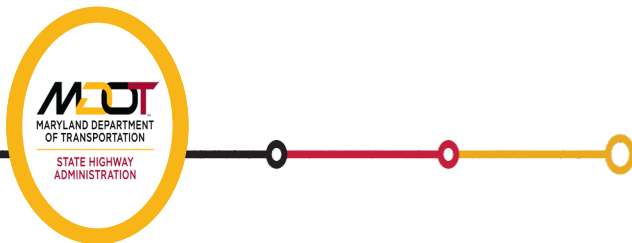


# Metals Teams Field/Shop Inspections and Testing



## WHAT WE DO Metals Team

- Inspect, approve or reject all Fabricated Iron and Steel used on MDOT and Federally Funded roads
- Inspect, approve or reject fabrication shops, plants, and manufacturer who supplies materials to MDOT projects
- Field Investigations and 24/7 Emergency Impact Response
- Quality Assurance Review and Perform Facility Audits
- Project visits including on-site training such as Bolt Tensioning
- Product Evaluations of materials / new materials
- Troubleshooting Welding Procedures for repair work
- Failure Analysis
- Review and note source of supply submission into the Materials Management System
- Create and maintain approved vendors/applicators list located at Qualified Steel Producers, Fabricators and Suppliers (Maryland.gov)





## Metals Team Inspection Support for the Office of Traffic and Safety and the Office of Structures/Bridge Inspection Remedial Engineering

- These inspections varied from emergency to routine signal pole and OH/Cantilever sign structure impact response to vehicular bridge impact to new structure fabrication/welding inspection
- Assisted on a variety of bridge repair inspections including crack arrest and failure analysis





*I-68 over Creek Rd. Girder Inspection*



**Bay Bridge Deck Grating**



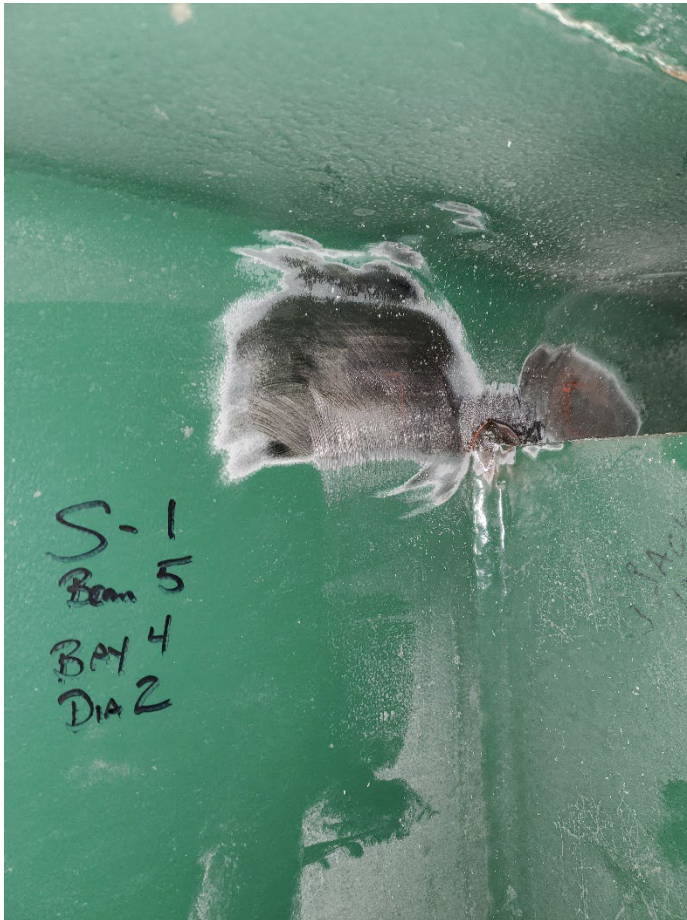


US-29SB and MD108 OH Impact



MD 28 over the Monocacy River Impact





**I-70 EB over Antietam Creek - Crack Arrest**



**MD 210 SB Pole Impact**



**I-495 over Good Luck Rd. Crack Arrest**





Auth Ave over I95 South- Bridge Impact



## Metals Team Inspection Tools

