



# **MDOT SHA Workspace Version 2.x Disclaimer and Setup Instructions**

Wednesday, December 9, 2020

## Disclaimer

This workspace is being provided under the same disclaimer as found at the web page [MDOT SHA CAD Standards Disclaimer](#).

The workspace itself contains two (2) different CAD standards. The first, “SHA V8 01”, is identical to the old CAD standard (MDSHA V8 01) in every meaningful way and is intended to provide backwards compatibility for existing projects. The new CAD standard, “SHA V8 02”, has significant changes and has been customized specifically for use with InRoads/OpenRoads SELECTseries 4 (SS4). (Note that the V7 CAD standard is no longer included in this workspace.)

2004 Workspace		2019 Workspace	
Standard	Version	Standard	Version
MDSHA_V8_01	01.01.15a	SHA_V8_01	01.02.03
		SHA_V8_02	02.01.03

As with the old workspace, the new workspace can be integrated for use with SHA’s ProjectWise unmanaged workspace profile on SHAEDMS01. Please read the installation instructions carefully, as the steps have changed. A significant amount of internal testing has been performed using this workspace, but every firm’s implementation of the current workspace is most likely unique and may reveal problems that MDOT SHA has not encountered.

This release is no longer considered Beta, however any firm that has not performed any testing during the Beta phase should consider the recommendations and tips specified in this document.

It is strongly recommended that a special test area be created to allow experienced users to test the workspace in a manner that allows them to return to the previous workspace if necessary. See FAQ #12 below for ideas on implementing the new workspace for specific users only.

## Requirements

The new workspace has been tested with the following software versions (recommended versions in **bold**):

### Windows 7:

- ProjectWise Explorer 08.11.11 (V8i SS4)
- MicroStation 08.11.07 (V8i SS1)
- MicroStation 08.11.09 (V8i SS3)
- Power Inroads 08.11.07 (V8i SS2)
- Power Inroads 08.11.09 (V8i SS4)

### Windows 10:

- **ProjectWise Explorer 10.00.03.280 (CONNECT)**
- **MicroStation V8i (SELECTseries 10) V8.11.09.919**
- MicroStation V8i (SELECTseries 3) V8.11.09.459 – Update 2
  - or V8.11.09.357 – Update 1
  - or V8.11.09.292 – Initial Release
- **InRoads V8i (SELECTseries 10) V8.11.09.912/918**
- Power InRoads V8i (SELECTseries 4) V8.11.09.904
- Power InRoads V8i (SELECTseries 2) V8.11.07.615

## Setup Instructions

**NOTE: Setup Instructions have changed from the previous workspace!**  
**We recommend preserving your old workspace until you are confident that the new one is operational and meeting your needs. THAT MEANS SAVING THIS WORKSPACE TO A NEW LOCATION.**

This zip file contains a new MicroStation Workspace configured with two different SHA CAD Standards:

- SHA\_V8\_01 (equivalent to old MDSHA\_V8\_01)
- SHA\_V8\_02 (configured especially for InRoads SS4)

Follow these steps to install and use the workspace:

1. Establish a directory where you want to maintain your SHA workspace. This can be either a local or network path. We recommend:

e.g. C:\ProgramData\Bentley\MDOT\

*(Don't see the ProgramData folder? Read the [FAQs](#))*

2. Extract the zip file to the above location. A new folder named "Workspace" is created - this is your "workspace root directory".

e.g. C:\ProgramData\Bentley\MDOT\Workspace\

3. Open the following file in a text editor like Notepad:

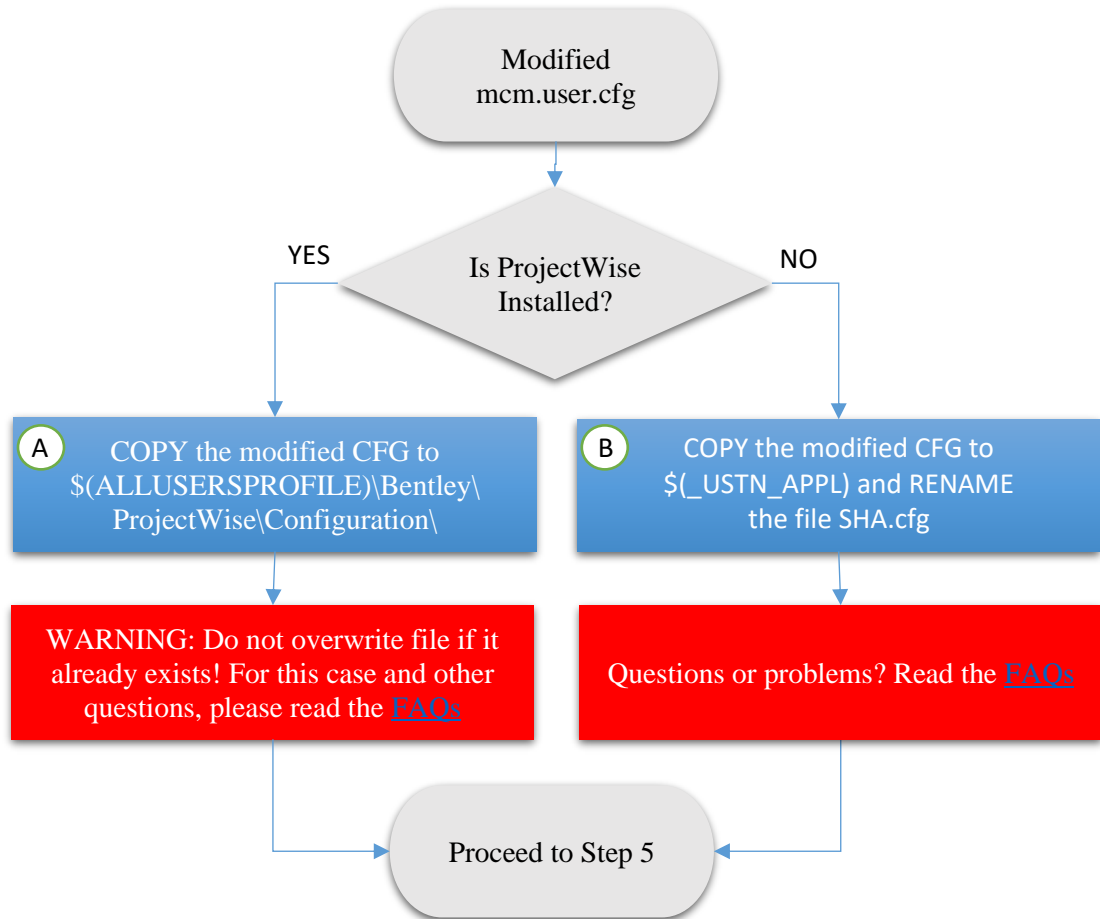
..\Workspace\config\ProjectWise\Configuration\mcm.user.cfg

and edit the "\_MDOT\_WORKSPACEROOT" variable to match your actual workspace root:

```
_MDOT_WORKSPACEROOT = C:/ProgramData/Bentley/MDOT/Workspace/
```

**NOTE: The config variable path MUST END WITH A FORWARD SLASH (/) after the "Workspace" folder (see example above)**

**4. The remaining steps are different than previous workspace instructions!**



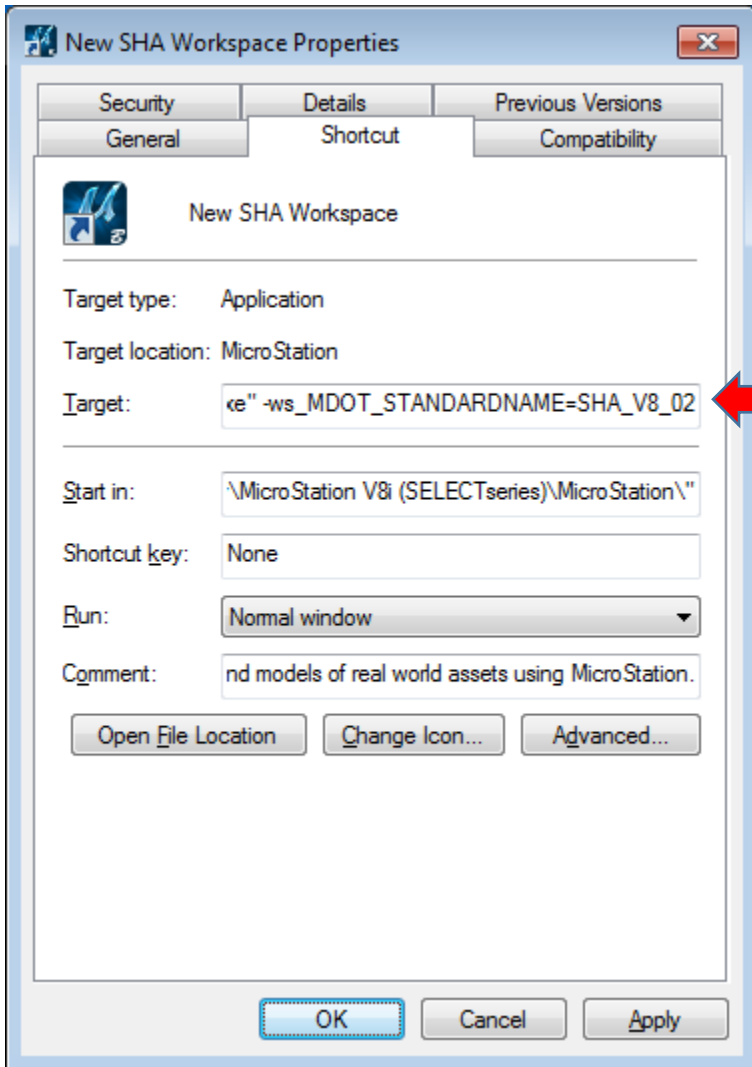
**5. Create a new desktop shortcut for MicroStation and/or Power InRoads**

**6. Right-click the shortcut and select Properties...**

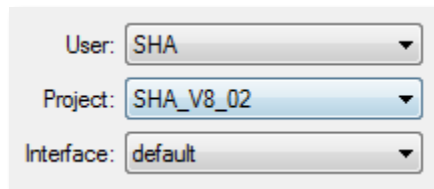
**7. In the Target field, go to the end of the existing text, then ADD a SPACE, then APPEND one of the following command-line switches, depending upon the CAD Standard version you wish to use:**

Application	Target Switch
InRoads SS2 Power InRoads SS2	-ws_MDOT_STANDARDNAME=SHA_V8_01

MicroStation (All versions)	
InRoads SS4 Power InRoads SS4 MicroStation (All versions)	-ws_MDOT_STANDARDNAME=SHA_V8_02



- Click OK to save the changes to the shortcut. Double-clicking the shortcut should launch the application into the new SHA workspace with the following defaults:



Note that the CAD Standard version is now tied to the Project PCF. While it is possible to switch the Project from the application's File Manager before opening a file, changes will not be preserved. Therefore, it is recommended to create separate shortcuts for each CAD standard version as needed.

## FAQs

### 1. What are the similarities and differences between the two installation methods in Step 4?

#### Similarities:

- Both methods yield identical configurations.
- Both methods can be used inside SHA's ProjectWise environment without further customization. (Note that the old SHAPW.cfg is no longer necessary).





#### Differences:

- Method 4A (..\ProjectWise\Configuration\mcm.user.cfg) will provide an SHA workspace to all Bentley applications on the computer, AS LONG AS each application is integrated with ProjectWise. (Note that ProjectWise does not actually have to be used. Each application will however need a custom SHA Workspace shortcut per steps 5-8).
- Method 4B (..\[Application]\config\appl\SHA.cfg) must be repeated for each CADD application. However, ProjectWise is not required to be installed.
- Method 4A can be installed without administrative permissions.
- Method 4B typically requires administrative permissions

### 2. I followed the ProjectWise instructions (Step 4A), but the new Workspace doesn't load... How do I troubleshoot?

- 2.1. Are you sure ProjectWise is installed?
- 2.2. Is ProjectWise integration enabled for your application?
- 2.3. If the answer to both is yes, generate a debug file (See [FAQ 7](#)) and use CTRL+F to check the following...

- a. `_MDOT_STANDARDNAME` is set (SHA\_V8\_01 or SHA\_V8\_02). If not, the problem is in the Target field of your shortcut
  - b. There are references to “mcm.user.cfg”. (If done correctly, there should be references to at least two different paths). If there are no references, then your CADD application is probably not integrated with ProjectWise (see [here](#)).
  - c. `_MDOT_WORKSPACEROOT` is set (and set correctly). If this variable is not set, something is likely wrong with the placement of your custom mcm.user.cfg file (see [here](#) and [here](#)).
3. I followed the non-ProjectWise instructions (Step 4B), but the new Workspace doesn't load... How do I troubleshoot?
- 3.1. Did you place the SHA.cfg file in the correct appl folder corresponding to your application shortcut? (A computer with multiple applications and versions will have a separate appl folder for each).
  - 3.2. If so, generate a debug file and use CTRL+F to check the following...
    - a. `_MDOT_STANDARDNAME` is set (SHA\_V8\_01 or SHA\_V8\_02). If not, the problem is in the Target field of your shortcut
    - b. `_MDOT_WORKSPACEROOT` is set (and set correctly). If this variable is not set, something is likely wrong with the placement of your custom SHA.cfg file (see [here](#)).
4. The shortcut launch crashes with message “Exiting, `_USTN_USERCFG ... not found`”, leaving a text window displayed.
- 4.1. Your `_MDOT_WORKSPACEROOT` path declaration is most likely wrong. Take a closer look at the file path in the message...

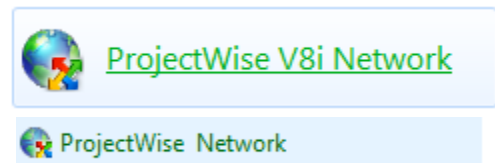
<code>_MDOT_WORKSPACEROOT = C:\CADD\Workspace\</code>		wrong slash used
<code>_MDOT_WORKSPACEROOT = C:/CADD/Workspace</code>		missing the last (/)
<code>_MDOT_WORKSPACEROOT = C:/CADD/Workspace/</code>		correct!
<code>_MDOT_WORKSPACEROOT = C:\CADD\Workspace/</code>		last one matters most!



- 4.2. Are any folder names concatenated? If so, you have either used a trailing backslash (\) instead of a forward slash (/) at the end of the path declaration, or else have no slash at all:
- 4.3. Is the drive letter missing? In fact, most of the path missing? (e.g. “Exiting, \_USER\_USERCFG = Users\untitled.ucf not found...”). In this case, check the spelling of \_MDOT\_WORKSPACEROOT. The variable has most likely been accidentally misspelled (“\_MDSHA\_”??) or deleted, and therefore dependent variables like \_USTN\_USER will be corrupted.

## 5. How do I determine if ProjectWise is installed?

- 5.1. Open Control Panel ...
- 5.2. Look for ProjectWise V8i Network (Win 7) or ProjectWise Network (Win 10)

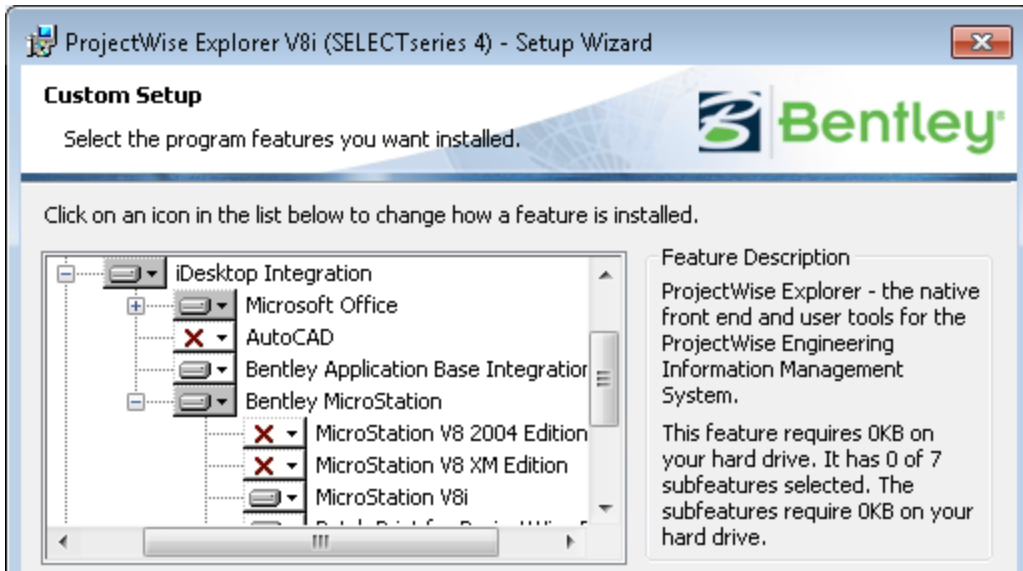


If you find this, ProjectWise is installed.

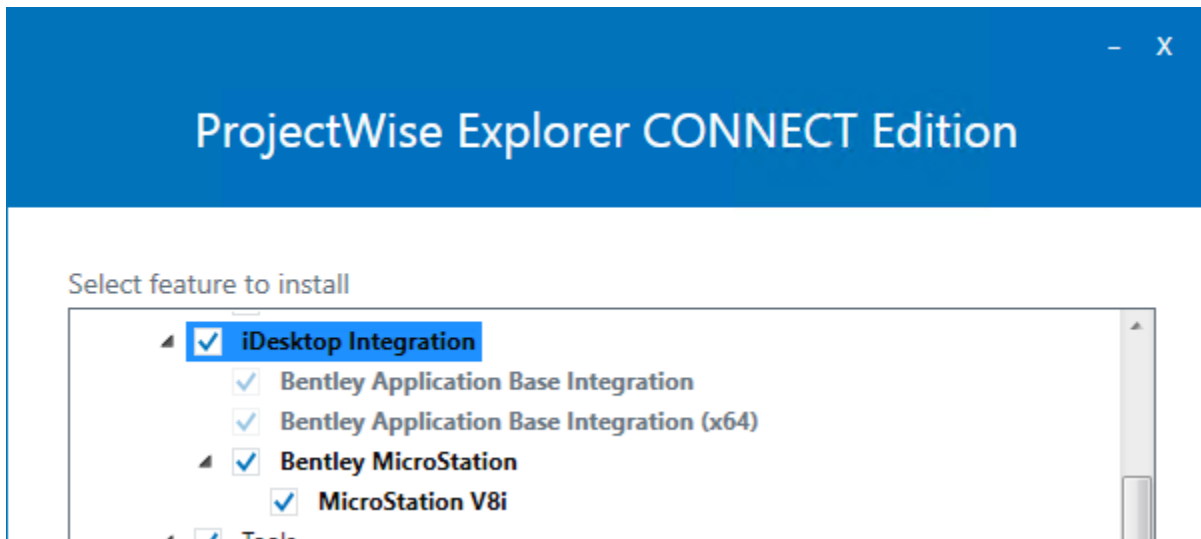
## 6. How do I determine if my application is integrated with ProjectWise?

Generally speaking, an application is integrated if you can browse ProjectWise from within the application. If a CADD application has been installed AFTER ProjectWise was installed, iDesktop Integration may need to be enabled:

- 6.1. Open Control Panel...
- 6.2. Open Programs and Features...
- 6.3. Select ProjectWise Explorer and select Change/Modify > iDesktop Integration



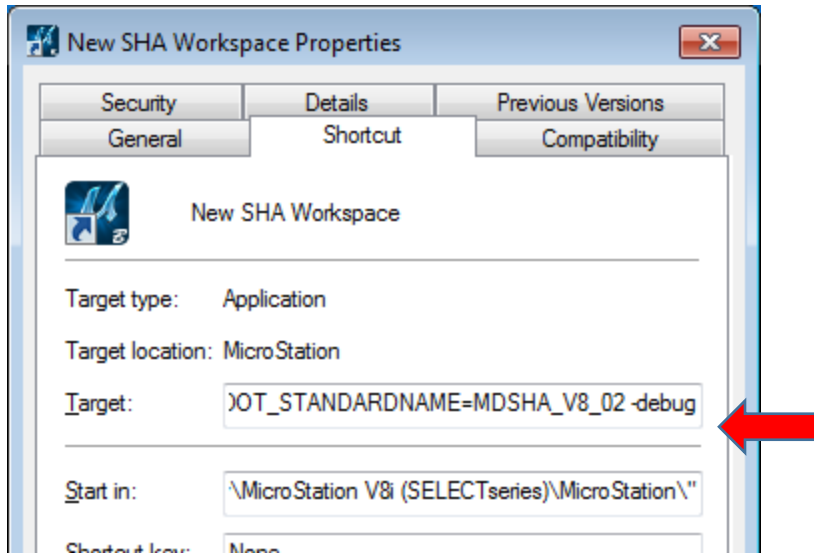
Windows 7, ProjectWise Explorer V8i setup... red “X” indicates application is not integrated with ProjectWise... To fix, click the “X” and select “this feature will be installed on local hard drive”.



Windows 10, ProjectWise Explorer CONNECT setup... check mark indicates that the application is integrated.

## 7. How do I generate a debug file?

- 7.1. Copy and paste the new shortcut and rename it “SHA DEBUG”
- 7.2. Right-click the SHA DEBUG shortcut and select Properties...
- 7.3. In the Target field, APPEND a space followed by “-debug” (without quotes)



7.4. Click OK to save the changes, then launch the shortcut...

7.5. When the text stops scrolling, find the msdebug.txt file path shown at the end of the configuration variable summary.

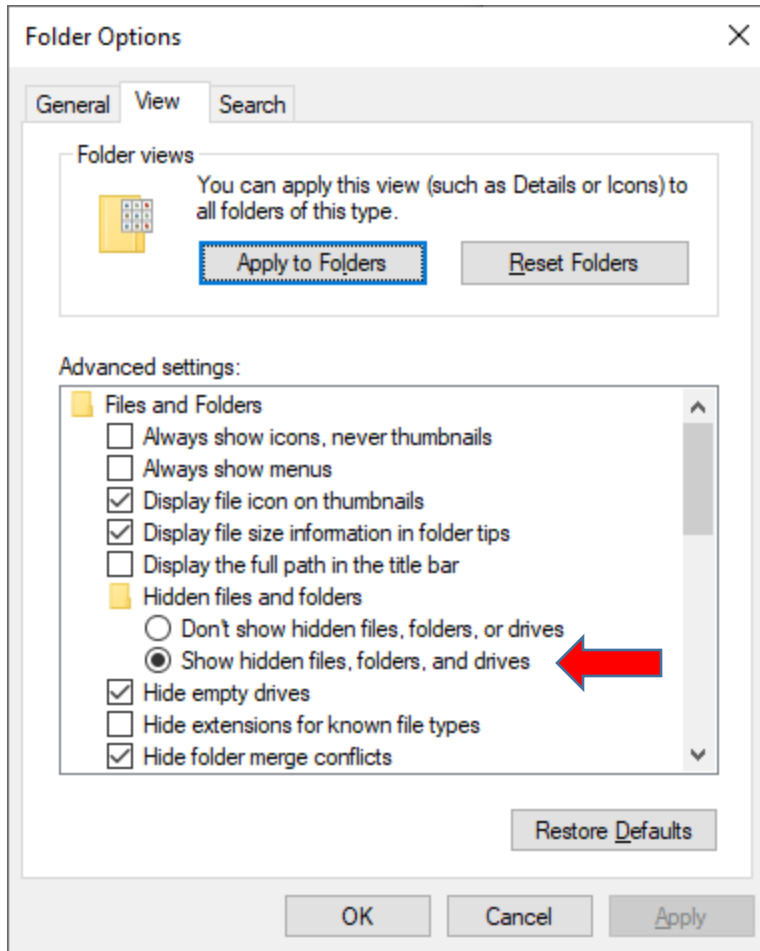
## 8. Where is C:\ProgramData\Bentley\...?

The "ProgramData" folder is often hidden. Follow these steps to view hidden items:

8.1. In Windows File Explorer, select File > Change folder and search options.

8.2. Select the View tab

8.3. Toggle the option to "Show hidden files, folders and drives"



8.4. Click OK.

*Still can't find C:\ProgramData\...? Refer to the next FAQ...*

## 9. Where is \$(ALLUSERSPROFILE)?

Typical path is C:\ProgramData... if this folder exists along with a Bentley subfolder, you found it. If not, try the following steps to determine the path:

8.5. Launch the CAD program...

8.6. Select Utilities > Keyin...

8.7. Keyin: expand echo \$(ALLUSERSPROFILE)

8.8. Open the Message Center to reveal the path

## 9. Where is \$(\_USTN\_APPL)?

Typical path is:

C:\Program Files (x86)\Bentley\[App+Version]\[Application]\config\appl

If you can't find it, try the following steps to determine the path:

- 9.1. Launch the CAD program...
- 9.2. Select Utilities > Keyin...
- 9.3. Keyin: expand echo \$(\_USTN\_APPL)
- 9.4. Open the Message Center to reveal the path:

e.g. C:\Program Files (x86)\Bentley\MicroStation V8i (SELECTseries)\MicroStation\config\appl\

## 10. What if I can't write to \$(\_USTN\_APPL)?

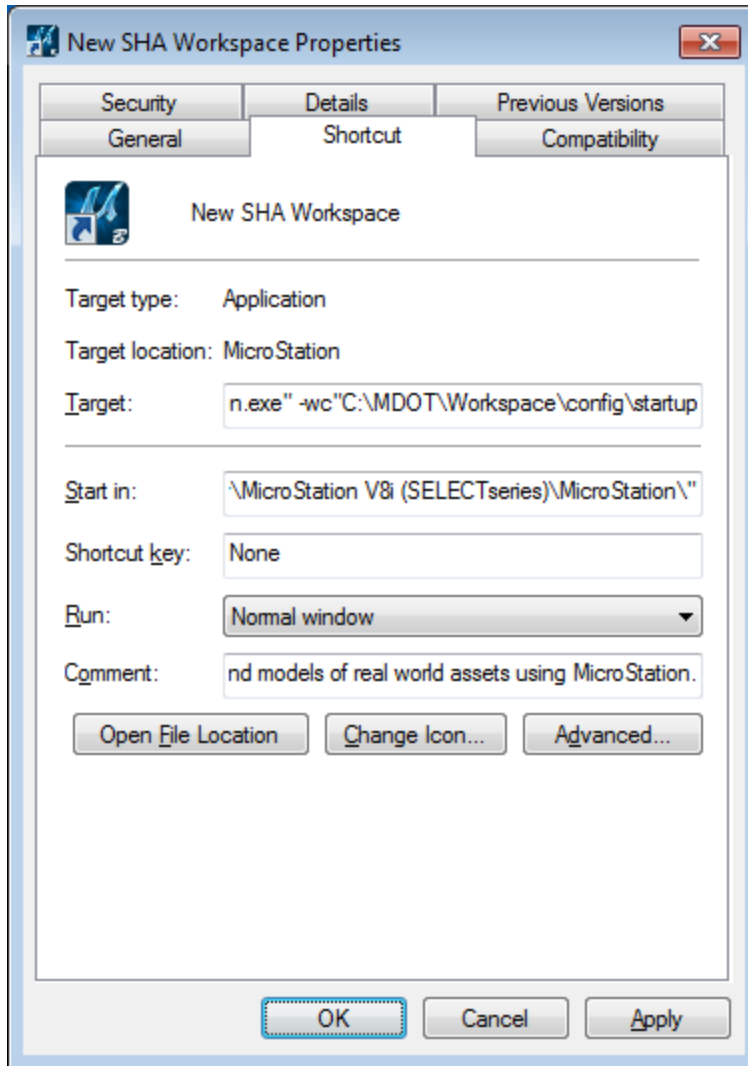
This directory falls under Program Files and therefore typically requires admin permissions. If this is a problem, you can try placing the renamed file (SHA.cfg) in your corporate \$(\_USTN\_SITE) directory. While this should still work, you may find that various aspects of your corporate workspace are now mixed with the SHA workspace, which may or may not be desirable.

If the result is undesirable, the workspace also includes a startup.cfg file located in ..\Workspace\config\startup that can be configured and referenced using the shortcut Target method employed by the previous workspace:

Application	Target Switch
InRoads SS2 Power InRoads SS2 MicroStation (All versions)	-wc"[WorkspacePath]\config\startup\startup01.cfg"
InRoads SS4 Power InRoads SS4 MicroStation (All versions)	-wc"[WorkspacePath]\config\startup\startup.cfg"

Where [WorkspacePath] should be replaced with the full Windows path to your SHA workspace folder, for example:

-wc"C:\MDOT\Workspace\config\startup\startup.cfg"



11. What if I can't find the directory:


`$(ALLUSERSPROFILE)\Bentley\ProjectWise\Configuration`

That is perfectly normal! While the Bentley subfolder should exist, the ProjectWise\Configuration subdirectories are not created during installation and must be created manually. To avoid spelling mistakes, try copying and pasting the directories (along with the modified mcm.user.cfg) from the provided SHA Workspace\config folder.

12. What should I do if the mcm.user.cfg file already exists?

You should edit the existing file rather than saving over it. However, before you do so, first doublecheck that the path is correct...

**NOTE: The mcm.user.cfg file is found in several locations! Specifically:**

 C:\Program Files (x86)\Bentley\ProjectWise\bin\

 C:\ProgramData\Bentley\ProjectWise\Configuration\

 C:\Users\[username]\AppData\Local\Bentley\ProjectWise\Configuration\

**The first path file is delivered by Bentley and should NOT be overwritten!**

Your custom mcm.user.cfg should be placed in EITHER the second path (to apply to all user profiles) OR the third path (to apply to a specific user).

However, if a file exists in either of those locations, it must have been customized for your office. Therefore, you should open the file and compare the contents against those of the new file... assuming that the contents do not match, APPEND the contents of the new file to the end of the existing file.

13. [Rather than create a special shortcut, is it possible to incorporate the SHA CAD standards into my existing corporate workspace?](#)

Yes. Now that the standards are project-based, they can be readily applied to your existing Project PCF files. With the mcm.user.cfg file (or SHA.cfg file) in place, copy the following lines into your PCF file:

To implement the old (SHA\_V8\_01) standard:

```
_MDOT_STANDARDNAME = SHA_V8_01
_MDOT_STANDARD = $_( _MDOT_WORKSPACEROOT )Standards/$_( _MDOT_STANDARDNAME ) /
%if exists ( $_( _MDOT_STANDARD )*.cfg )
%   include $_( _MDOT_STANDARD )*.cfg
%else
%   error Exiting, $_( _MDOT_STANDARD )*.cfg not found
%endif
```

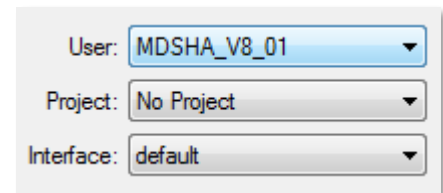
To implement the new (SHA\_V8\_02) standard:

```
_MDOT_STANDARDNAME = SHA_V8_02
_MDOT_STANDARD = $_MDOT_WORKSPACEROOTStandards/$_MDOT_STANDARDNAME /
%if exists ($_MDOT_STANDARD)*.cfg
% include $_MDOT_STANDARD)*.cfg
%else
% error Exiting, $_MDOT_STANDARD)*.cfg not found
%endif
```

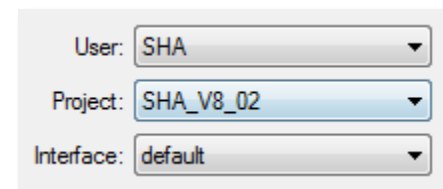
As mentioned in [FAQ 10](#), mixing the SHA workspace with your corporate workspace can have unanticipated results. It may be worthwhile to [generate a debug](#) file using both methods (standard shortcut vs. PCF edit) and perform a detailed comparison to ensure that essential variables are properly set.

## Notes

1. As stated earlier, this workspace is a complete replacement of the previous workspace. However, its files should be placed in a completely different location. The previous workspace should be left as-is to allow reverting back to it, should it become necessary.
2. The previous (old) workspace as implemented uses UCF files (User-based) to implement the V7 or V8 standards.
3. The new workspace has relocated this control to PCF files (Project-based). Additionally, there is no longer a V7 workspace.



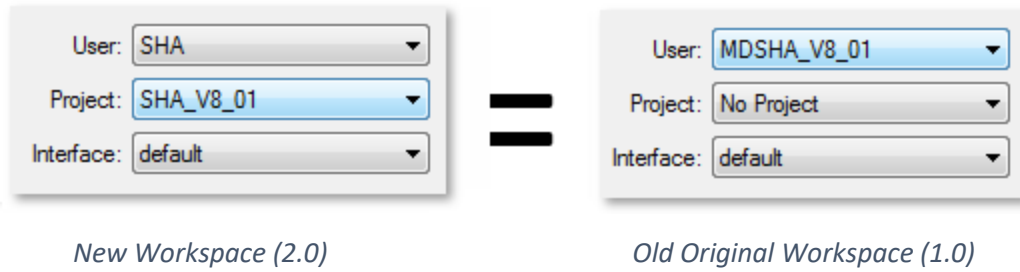
User: MDSHA\_V8\_01  
Project: No Project  
Interface: default



User: SHA  
Project: SHA\_V8\_02  
Interface: default

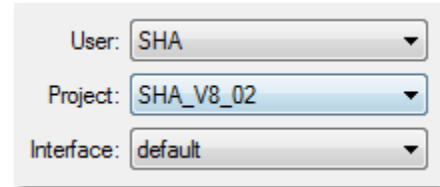


4. Within the new Workspace, access to its version of the previous (old) standard is accomplished using the SHA\_V8\_01 Project.

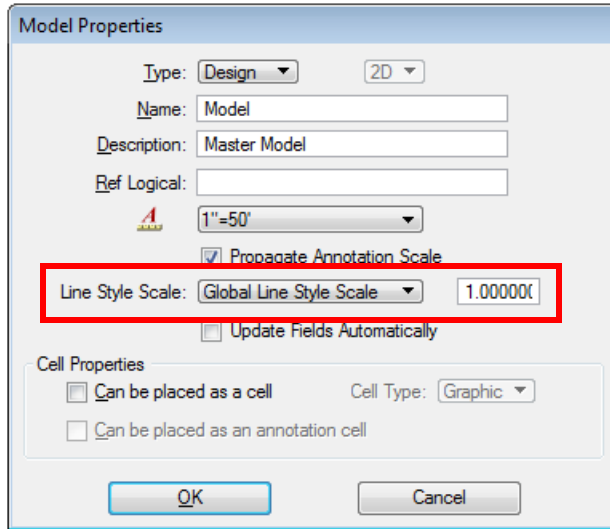


- a. Except for minor technical revisions, the “SHA\_V8\_01” standard is identical to the current “MDSHA\_V8\_01” standard in all important respects (levels, cells, standard files, barmenus, etc.).

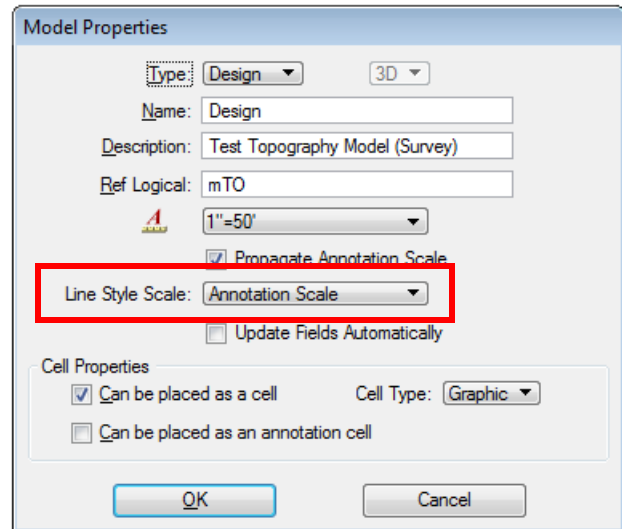
5. Within the new Workspace, access to its version of the new CADD standard is accomplished using the “SHA\_V8\_02” Project.



- a. While its overall appearance will be similar to the V8\_01 standard, there are significant changes to many of the settings and workflows. Many of these changes are necessary either for the Open Roads parts of InRoads V8i (SELECTseries 4) or are in anticipation of the eventual migration to Bentley Connect Edition software.
  - b. All scaling of Text, Cells and Line Styles are controlled by the MicroStation Annotation Scale settings. (The current workspace is only configured for Text). InRoads command output continues to require separate scale factor.
    - i. Models created in this workspace have the line style scaling property set to use annotation scale instead of the global line style scale factor. This makes it difficult to reference files from one standard into files in the other standard without making a number of significant changes to the reference files.



Old



New

- ii. No seed files from the original workspace should be used with the new workspace due to this and item 5d, below.
- c. The level naming system of the V8 workspace has been replaced by a National CAD Standards (NCS) compliant naming convention. It is very similar to the ones used at most federal agencies, WSSC, the US Army COE and the MDOT MAA and MPA.
  - i. The workspace uses Element Templates, ByLevel Symbology, Sheet Models, Drawing Models, Annotation Cells and more. The ByLevel implementation within this release has been applied to a limited number of Element Templates. Future updates are planned to expand these numbers significantly.
  - ii. This workspace is configured and optimized for use with Bentley InRoads V8i (SELECTseries 4) with Open Roads Technology.
- d. All seed files or standard DGN files in both the SHA\_V8\_01 and SHA\_V8\_02 Project workspaces have had their global origins reset to the center of the design plan/cube. This is necessary for any tools that generate sheet models and files.

- i. It is anticipated that many of these sheet generating tools will be accomplished entirely within a Bentley product in coming releases and these require an unshifted global origin.
  - ii. This allows Print Sheet files to be defined as Sheet Models and to also allow the SHA Border Reference file to be assigned as the Border Attachment, linking the Border Reference file and Sheet Boundary.
6. In the previous workspace, there was a common folder (MDSHA\_Common) for files that could be shared by V7 and V8\_01 standards. That folder has been replaced by a new common folder (SHA\_Common) that is for files that can be shared between the V8\_01 and V8\_02 standards.
7. The new workspace will keep track of Workspace Release using a numbering system consisting of Major.Minor.Patch. Because the workspace contains two CAD standards, the Standards Version use a numbering system consisting of Standard.Major.Minor.Patch.
  - a. The current workspace release is 02.01.02.
  - b. As bugs are resolved in our development workspace, the Patch value will increment (e.g. 02.01.04).
  - c. It is only upon publishing updates to SHA's website that the Minor value will increment (e.g. 02.02.00).
  - d. Determine the current version of your workspace by selecting MDSHA > Help > About Workspace
  - e. All published updates that include changes to standard files (such as the border) are anticipated to include updates for both the V8\_01 and V8\_02 standards for the time being.

8. The new workspace relies on the use of the mcm.user.cfg file introduced by ProjectWise. Its use and contents are explained in the link found on the [Collaboration Technologies / IDS](#) web page - [How to Integrate MicroStation with ProjectWise \(3/30/2018\)](#). The ProjectWise help documents contain additional information about this file. The copy of the file delivered with ProjectWise (See FAQ #12) also contains additional documentation.
9. In General, InRoads Ss2 should be used with the SHA\_V8\_01 standard and InRoads Ss4 should be used with the SHA\_V8\_02 standard. At this time, the SHA\_V8\_01 standard does not contain the necessary configuration to support InRoads Ss4.
10. MDOT SHA has begun using Power InRoads as its platform, but the workspace should still work with a MicroStation with InRoads platform.